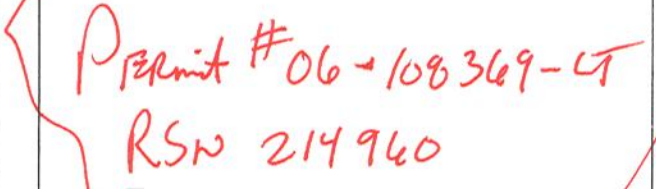


City of Aurora
Building Codes Division
15151 E Alameda Pkwy
Aurora, CO 80012
(303) 739-7420



Notice

**This material is subject
to copyright protection
pursuant to Federal Law:
17 United States Code
Section 106.**







Field inspection consultation is available upon request. Call 303-739-7420 to request a consultation.

This plan was reviewed for adopted codes and NOT reviewed for compliance with ADA or FHA accessibility. Contact 800-949-4232 (ADA) and 303-894-7822x325 (FHA) for federal accessibility requirements that apply to your project.

John L
CITY OF AURORA
BUILDING DIVISION
APPROVED AS NOTED *M*
DATE 3/23/06

WHEN BEV CENTER SINK EQUIP. IS IN AN AREA WHERE VCT WOULD NORMALLY GO, LOCATE SHEET VINYL AROUND SINK(S), FLASH COVE TO WALL (3/8" MIN. RADIUS & 4" MIN. HEIGHT).

REMODEL LEGEND

	RESET
	NEW
	EXISTING
	NEW/RESET

FINISH SCHEDULE

C-1 - INTERFACE CARPETS, SLENIUM 2000, SERIES COLOR 7004 PLUM
(INSTALLED WITH QUARTER TURN)

P-1 - BENJAMIN MOORE, AMERICA'S COLORS, YOSEMITE SAND
REGAL SATIN IMPERVO ENAMEL #235
AS SPECIFIED IN WOOD TRIM, DOOR & DOOR FRAME

PL-1 - WILSONART, #7064-60 ESCADA

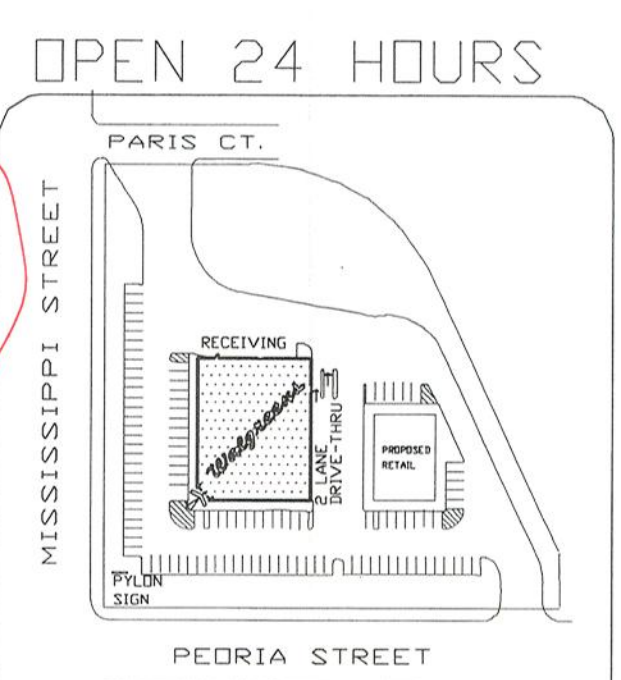
PL-2 - WILSONART, #1595-60 BLACK

PL-3 - WILSONART, #1530-60 LIGHT BEIGE

WC-1 - GENCO, 1-NG-387 INDENSE

VC-1 - ARMSTRONG, #75 DESERT SAND

1. TELEPHONE
2. COMPUTER
3. INTERCOM PLUS TERMINAL
4. PRINTER
5. STNK
6. TV/VCR (WALL MTD.)
7. FAX MACHINE
8. BLOOD BROW CHAIR (CONTACT HEALTH SERVICES)
WAITING CHAIR KI - PIRETTI TORSION SEED BASE CHAIR
WITH ARMS, UPHOLSTERED SEAT & BACK.
ARM CAPS/SHELL BL. & GR. GREEN
UPHOLSTERY: CANDOTIS DAMSON - GRADE 1
9. DESK CHAIR KI - PIRETTI PEDESTAL CHAIR, COLOR SAME AS # 9
10. ALL MILLWORK AND DESIGN LAYOUT BY DARLING STORE
FIXTURES. ADVANCED PHARMACY CONCEPTS. ANY QUESTIONS
CONCERNING LAYOUT, INSTALLATION, ETC. PLEASE
CALL 1-877-800-4113 FOR MORE INFORMATION.
THIS IS NOT A DESIGN BY WALGREENS FACILITIES PLANNING
DEPARTMENT AND ALL CORRESPONDENCE REGARDING THESE
ELEMENTS MUST COME THROUGH DARLING STORE FIXTURES.
11. FLOOR AND WALL CABINET
12. (1) 3 DRAWER FILE CABINET (40" X 18 1/2" X 26 1/2")
13. (2) 2 DRAWER FILE CABINETS (29" X 15" X 26 1/2")
14. PROVIDE (2) 18" X 48" PORTABLE TABLES.
15. BRETFOUR MODEL NO. PLR1848

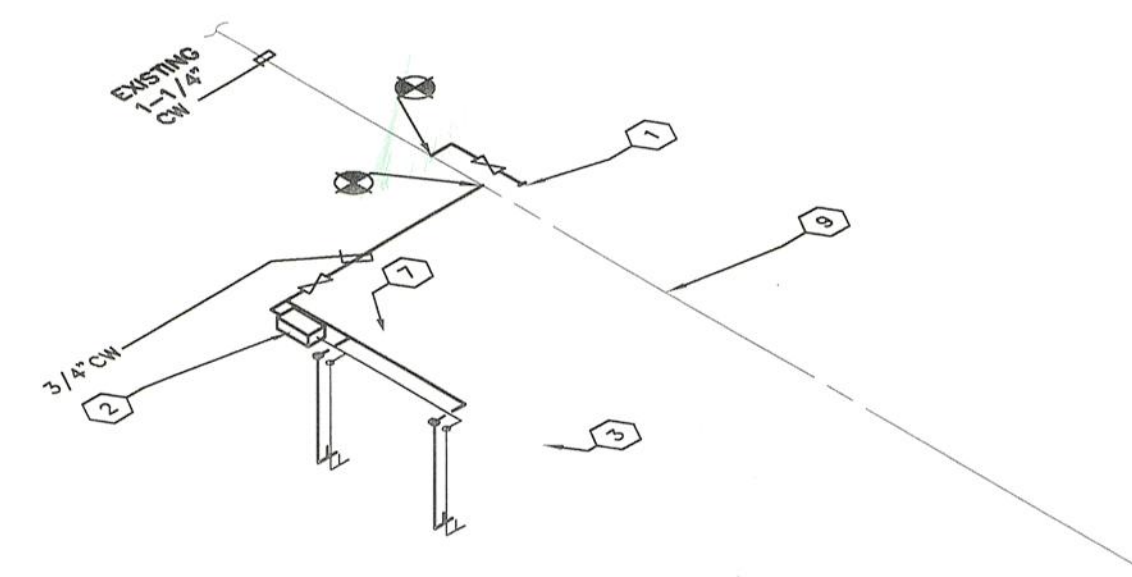
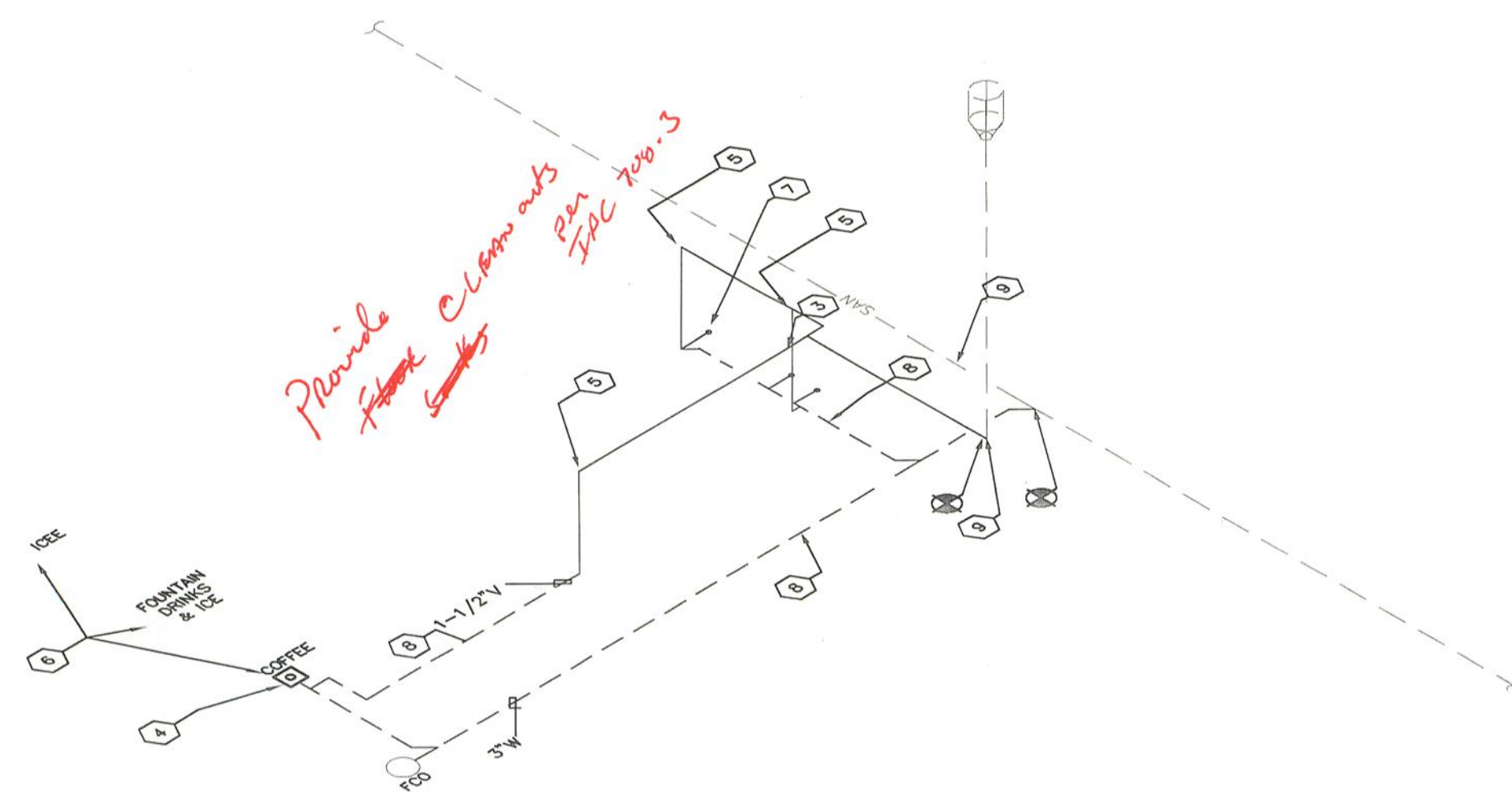
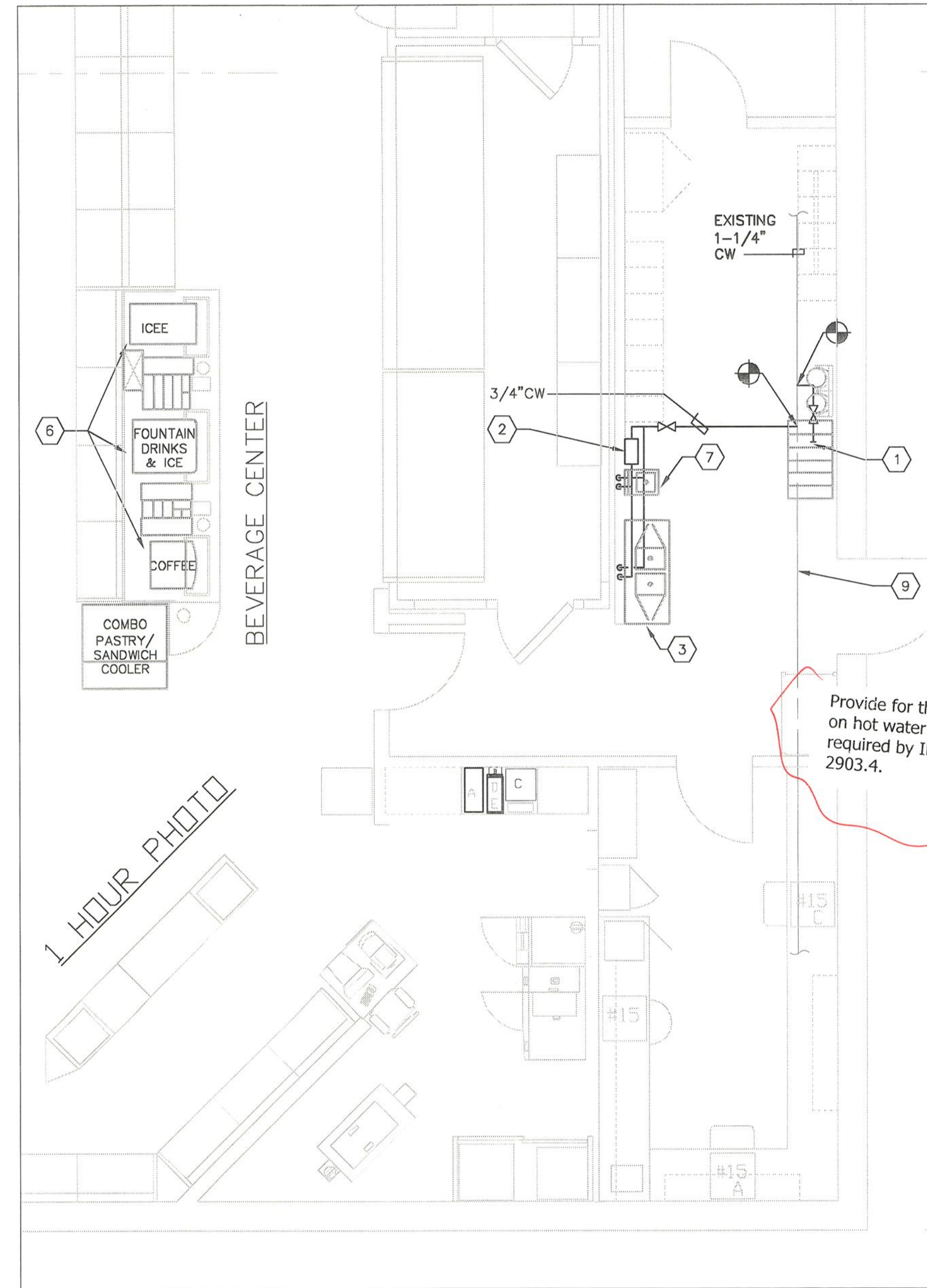
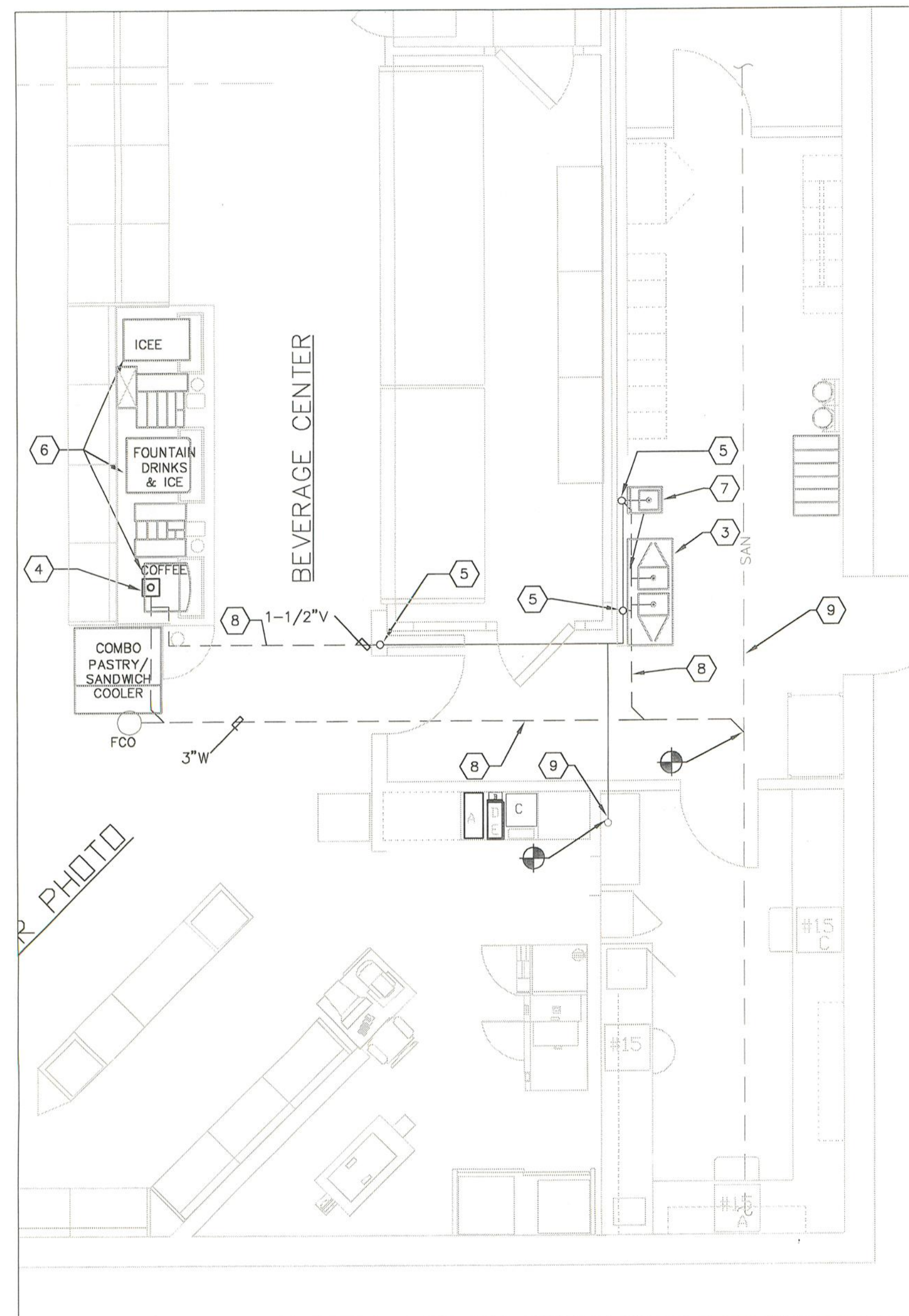


FOR REFERENCE ONLY: SEE CONTRACT
DOCUMENTS FOR DETAILED SITE PLAN

SR. MANAGER PLANNING & DESIGN		
----------------------------------	--	--

SUPERSEDES PLAN DATED: 11/26/96	REVIEWED BY: 	OF 	DWGS.
---------------------------------------	----------------------	--------	-------





32



- ## NOTES
- 1 - ALL WORK SHOWN TO COMPLY WITH ALL NATIONAL, STATE AND LOCAL CODES, ORDINANCES, ETC.
 - 2 - SEE ALL OTHER DRAWINGS AND WAGRENS SPECIFICATIONS FOR ADDITIONAL WORK OR CLARIFICATION OF NECESSARY WORK.
 - 3 - ALL WATER & GAS VALVES SHALL BE JOMAR T/SID, BALL TYPE (OR EQUAL).
 - 4 - ALL HOT AND COLD WATER PIPING (ABOVE FINISHED FLOOR) TO BE COPPER, TYPE "L" (ALL SUPPLY PIPING WITHIN THE BLDG. TO ABOVE GROUND).
 - 5 - ALL PIPING ABOVE GRADE SHALL BE INSULATED.
 - 6 - WATER SUPPLIES FOR ALL FIXTURES (EXCEPT URINALS) SHALL BE CHROME PLATED BRASS AND HAVE WHEEL (NOT KEY) OPERATED STOPS.
 - 7 - ALL PLUMBING FIXTURES SHALL HAVE BRANCH SIZE, 12" LONG AIR CHAMBERS OR CODE APPROVED DIE.

- ## PLUMBING KEYED NOTES
- 1) 1/2" COLD WATER SUPPLY WITH PRESSURE REGULATOR, CHECK VALVE, AND SHUTOFF VALVE TO THE AREA ADJACENT TO THE STURP RUCK LOCATION PROVIDED BY THE PLUMBING CONTRACTOR. (NOTE: PROVIDE BACKFLOW PREVENTION OR RPZ VALVE). THE BEVERAGE VENDOR TO MAKE THE FINAL W/L CONNECTION TO STURP RUCK AS NECESSARY.
 - 2) WATER HEATER FOR BEVERAGE CENTER SINKS, TANKLESS NEW. STEIBEL ELITE MODEL NO.DHC 10-2, 200B, 11/2", 72 KW, 49°F TEMP. RES. 8" GPM OR APPROVED EQUAL. MOUNTING PER MANUFACTURER INSTRUCTION. VERIFY LOCATION IN FIELD. FOR THE NEAREST DEALER CONTACT STEIBEL ELITRON 800-800-8423.
 - 3) NEW ADA TWO(2) COMPARTMENT SINK ADVANCE TABCO, BOWL. SIZE:10"x14"x16" DEEP, 50" LONG, 4" DEEP WITH 1/2" DRABANDBOARDS. SINK BOWLS: 304 STAINLESS STEEL DEEP DRAIN WITH A 3" RADIUS AND A SATIN FINISH. BACKPLASH: FAUCET PUNCHED WITH 8" O.C. DRABANDBOARDS: INTEGRAL WITH A 3/4" PITCH PER LINEAR FOOT. LEGS: 304 STAINLESS STEEL WITH METAL ADJUSTABLE BRULET FEET. CHAIGAO FAUCET: 445-DAT3, 63 AERATOR, PROVIDED. DRAIN: 2" VENT, 3/2" COLD WATER WITH BALL VALVE AND 3/2" HOT WATER FROM NEW WATER HEATER. CONNECT TO THE EXISTING COLD WATER LINE, VENT AND 1/2" REQUIRED R.P.
 - 4) NEW ZURN MODEL 72-1910, 8"Ø, A.R.E. SANI-FLOOR RECEPTOR 8" SUMP DEPTH. PROVIDE TRAP AND VENT. CONNECT NEW 3" WASTE LINE TO EXISTING 4" SANITARY PIPE AS SHOWN.
 - 5) 2" VTR UP WALL. (CONNECT TO EXISTING VENT IF POSSIBLE).
 - 6) CONNECTIONS FOR BEVERAGE EQUIPMENT BY BEVERAGE CENTER INSTALLER.
 - 7) NEW ADA HAND SINK ADVANCE TABCO, BOWL. SIZE:16"x14"x25" DEEP, 20" x 24" DEEP, 18 GAUGE, BACKPLASH, DECK MOUNTED WITH WRESTL HANDBASKET, 18" HANDBASKET, 18" HANDBASKETS & TRU-BRO FITTINGS. PROVIDE 1/2" DRAIN, 2" VENT, 3/2" COLD WATER WITH BALL VALVE AND 3/2" HOT WATER FROM NEW WATER HEATER. CONNECT TO THE EXISTING COLD WATER LINE, VENT AND 1/2" REQUIRED R.P.
 - 8) SAW OUT FLOOR & REMOVE SAME. EXCAVATE & INSTALL SAN WASTE, VENT PIPING OR PLUMBING FIXTURE. BACK FILL WITH COMPACTED GRANULAR FILL. MATCH EXISTING FLOOR FINISH.
 - 9) EXISTING SANITARY TO REMAIN.

- LEGEND**

— — — —	(CW) COLD WATER	
— — — —	(HW) HOT WATER	
— — SAN — —	SANITARY SEWER	
	FLOOR CLEAN OUT	} NOT ALLOWED IN PHARMACY
	VALVE	
	VALVE	
	POINT OF NEW CONNECTION	

Provide for thermal expansion on hot water supply system as required by IPC 607.3 or IRC 2903.4

AURORA BUILDING INSPECTION
ELECTRICAL SECTION
APPROVED
SUBJECT TO COMMENTS AS NOTED
AND FIELD INSPECTIONS

APPROVED
SUBJECT TO COMMENTS AS NOTED
AND FIELD INSPECTIONS

Field verify note 2
if electrical is hardwired.

CITY OF AURORA
BUILDING DIVISION
APPROVED AS NOTED *ML*
DATE 3/23/06
03 IPC

Walgreens
FACILITIES PLANNING AND DESIGN
106 WILMOT ROAD DEERFIELD, IL
847-940-2500 60015-4616

PROJECT DATA		
TYPE	GENERAL SALES	FOOD MART
NEW LOCATION	PHARMACY	SECURITY
NEW LOCATION EXIST'G BLDG	LIQUOR	24 HOUR STORE
REMODEL	1 HR PHOTO	OTHER

[illegible]

NO.	DATE	BY	DESCRIPTION
-----	------	----	-------------

CERTIFICATION AND SEAL

I HEREBY CERTIFY THAT THIS
PLAN AND SPECIFICATION
WAS PREPARED BY ME OR
UNDER MY DIRECT
SUPERVISION AND THAT I AM
A DULY REGISTERED
ARCHITECT OR ENGINEER
UNDER THE LAWS OF THE
STATE OF COLORADO
AS SIGNIFIED BY MY
HAND AND SEAL.

STORE NUMBER 04307

PROJECT NAME
WALGREENS STORE
12051 EAST MISSISSIPPI BLVD.
AURORA, CO
MINOR REMODEL

DRAWING TITLE
PLUMBING PLAN

CADD PLOT:
04307P11A.DWG

VOID PLOT:

SUPERSEDES
PLAN DATED:

SCALE: AS NOTED

DRAWN BY:
FM

DATE: 06/06/05REVIEWED BY
GWP/JG

DRAWING NO.

P1.1A

OF DWGS

RETURN TO:
ARCHITECT
MECHANICAL
PLUMBING
ELECTRICAL
LIFE SAFETY

City of Aurora Plan Review
Project: 201410000 Business Center
Contractor: John P. Poirier
Address: 12051 E. Mississippi Ave
RSN: 214900
Permit Number: 06-00369-07
Date: 3/23/06

Plan Loc 27-1-A

DATE	REVISION	BY	CHKD
03/23/06	1	JPP	JPP
03/23/06	2	JPP	JPP
03/23/06	3	JPP	JPP
03/23/06	4	JPP	JPP
03/23/06	5	JPP	JPP
03/23/06	6	JPP	JPP
03/23/06	7	JPP	JPP
03/23/06	8	JPP	JPP
03/23/06	9	JPP	JPP
03/23/06	10	JPP	JPP
03/23/06	11	JPP	JPP
03/23/06	12	JPP	JPP
03/23/06	13	JPP	JPP
03/23/06	14	JPP	JPP
03/23/06	15	JPP	JPP
03/23/06	16	JPP	JPP
03/23/06	17	JPP	JPP
03/23/06	18	JPP	JPP
03/23/06	19	JPP	JPP
03/23/06	20	JPP	JPP
03/23/06	21	JPP	JPP
03/23/06	22	JPP	JPP
03/23/06	23	JPP	JPP
03/23/06	24	JPP	JPP
03/23/06	25	JPP	JPP
03/23/06	26	JPP	JPP
03/23/06	27	JPP	JPP
03/23/06	28	JPP	JPP
03/23/06	29	JPP	JPP
03/23/06	30	JPP	JPP
03/23/06	31	JPP	JPP
03/23/06	32	JPP	JPP
03/23/06	33	JPP	JPP
03/23/06	34	JPP	JPP
03/23/06	35	JPP	JPP
03/23/06	36	JPP	JPP
03/23/06	37	JPP	JPP
03/23/06	38	JPP	JPP
03/23/06	39	JPP	JPP
03/23/06	40	JPP	JPP
03/23/06	41	JPP	JPP
03/23/06	42	JPP	JPP
03/23/06	43	JPP	JPP
03/23/06	44	JPP	JPP
03/23/06	45	JPP	JPP
03/23/06	46	JPP	JPP
03/23/06	47	JPP	JPP
03/23/06	48	JPP	JPP
03/23/06	49	JPP	JPP
03/23/06	50	JPP	JPP
03/23/06	51	JPP	JPP
03/23/06	52	JPP	JPP
03/23/06	53	JPP	JPP
03/23/06	54	JPP	JPP
03/23/06	55	JPP	JPP
03/23/06	56	JPP	JPP
03/23/06	57	JPP	JPP
03/23/06	58	JPP	JPP
03/23/06	59	JPP	JPP
03/23/06	60	JPP	JPP
03/23/06	61	JPP	JPP
03/23/06	62	JPP	JPP
03/23/06	63	JPP	JPP
03/23/06	64	JPP	JPP
03/23/06	65	JPP	JPP
03/23/06	66	JPP	JPP
03/23/06	67	JPP	JPP
03/23/06	68	JPP	JPP
03/23/06	69	JPP	JPP
03/23/06	70	JPP	JPP
03/23/06	71	JPP	JPP
03/23/06	72	JPP	JPP
03/23/06	73	JPP	JPP
03/23/06	74	JPP	JPP
03/23/06	75	JPP	JPP
03/23/06	76	JPP	JPP
03/23/06	77	JPP	JPP
03/23/06	78	JPP	JPP
03/23/06	79	JPP	JPP
03/23/06	80	JPP	JPP
03/23/06	81	JPP	JPP
03/23/06	82	JPP	JPP
03/23/06	83	JPP	JPP
03/23/06	84	JPP	JPP
03/23/06	85	JPP	JPP
03/23/06	86	JPP	JPP
03/23/06	87	JPP	JPP
03/23/06	88	JPP	JPP
03/23/06	89	JPP	JPP
03/23/06	90	JPP	JPP
03/23/06	91	JPP	JPP
03/23/06	92	JPP	JPP
03/23/06	93	JPP	JPP
03/23/06	94	JPP	JPP
03/23/06	95	JPP	JPP
03/23/06	96	JPP	JPP
03/23/06	97	JPP	JPP
03/23/06	98	JPP	JPP
03/23/06	99	JPP	JPP
03/23/06	100	JPP	JPP

