



City of Aurora Public Works Department

BUILDING PERMIT APPLICATION

Building Division • 15151 E. Alameda Parkway, Ste 2400 • Aurora, CO 80012 • 303-739-7420 • Fax: 303-739-7412
Email: permitcounter@auroragov.org

Project Address 15301 East Iliff ave		Unit #
Project Name: Walgreens		
Contractor Company Name FREEDOM FIRE PROTECTION	Phone 303.827.2060	Fax 303.827.2070
Contact Person LUIS RIVERA	Phone	
Email LUISR@FREEDOMFIREPRO.COM		Fax
Architect and/or Engineer Contact information for correction items		
Architect or Engineer name	Email	
Phone	Fax	
Owner (Required for Certificate of Occupancy) only		
Owner address		
Email		
Valuation / FDA: \$ 650		Materials Cost: \$ 200
FDA = Fee Determination Assessment. (Also known as the value of project) has no relationship to the construction costs for the building which can vary greatly. Rather, The assessment is used only to determine the appropriate level of fees to fund our code compliance activities.		
Describe The Work You Will Be Doing: <u>TENANT FINISH TO EXISTING NFPA 13 SPRINKLER SYSTEM</u>		

I declare under penalty that this application has been examined by me and that the statements made herein are made in good faith pursuant to City of Aurora tax and licensing regulations; and to the best of my knowledge and belief are true, correct and complete.

Print Name LUIS RIVERA **Signature** [Signature] **Date** 7-15-2015

BOARD OF APPEALS: Contractor's Appeals and Standards Board. Applicants have the right to have the board hear appeals of orders, decisions or determinations made by the building official relative to the application and interpretation of the building code. Any application for appeal to the board shall be based on a claim that the true intent of the code or the rules legally adopted there under have been incorrectly interpreted, the provisions of the building code do not fully apply or an equally good or better form of construction is proposed.

THIS SPACE FOR OFFICE USE ONLY

Fee Determination Assessment: \$ 650

Change of occupancy/use: ☐ Yes ☐ No

REVIEWS

- ☐ Structural
- ☐ Mechanical
- ☐ Plumbing
- ☐ Electrical
- ☐ Fire-Life Safety
- ☐ Building Life Safety

INSPECTIONS

- ☐ Structural
- ☐ Mechanical
- ☐ Plumbing
- ☐ Electrical
- ☒ Life Safety
- ☐ Gate/Hazard

Intake Date: _____

Balance Due: \$ _____

PRE APPROVAL Initial _____ ☐ Zoning ☐ Water

Exterior changes? ☐ Yes ☐ No

Homeowner verified: ☐ Yes ☐ No

Permit Type: CT

Mid roof / Ave Bldg Height: 15-985509

Parent Permit RSN: 973525

Plans Examiner: JOE

Subtype: Sprinkler

RSN: 1032857

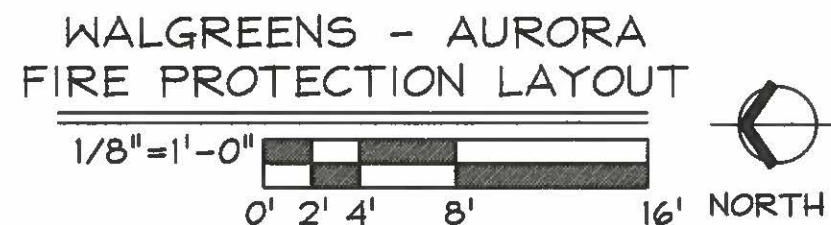
Plans Picked Up By: _____

Company Name: _____

Phone Number _____

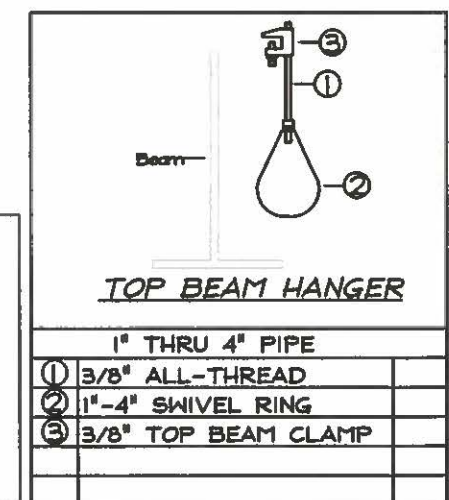
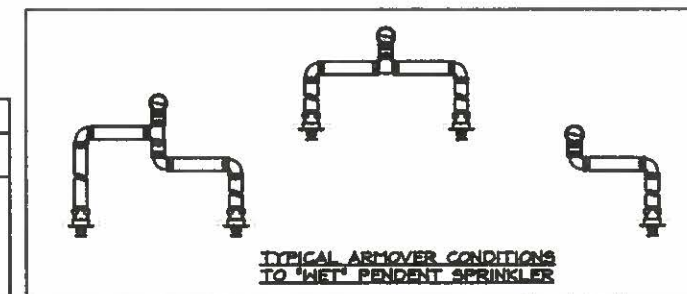
RSN: 1032857

Permit #: 2015-985509-LT



APPROVED
City of Aurora Building Division
JMA 7/15/15
2007 NFPA 13
Permit # 2015-985509-CT
RSW 1032857

HANGER SPACING LEGEND							PER NFPA 13 TABLE 9.2.2			
NOMINAL PIPE SIZE (IN.)	3/4"	1"	1 1/4"	1 1/2"	2"	2 1/2"	3"	4"	6"	8"
STEEL PIPE (NOT THREADED L/M)	N/A	12-0	12-0	15-0	15-0	15-0	15-0	15-0	15-0	15-0
THREADED L/M	N/A	12-0	12-0	12-0	12-0	12-0	N/A	N/A	N/A	N/A
COPPER	8-0	8-0	10-0	10-0	12-0	12-0	12-0	15-0	15-0	15-0
CPVC	8-6	6-0	6-6	7-0	8-0	9-0	10-0	N/A	N/A	N/A



1. THIS IS A TENANT FINISH TO A TENANT SYSTEM AT 15301 EAST ILIFF AVE, AURORA, CO CONSISTING OF THE EXISTING WALGREENS.
2. NEW AND RELOCATED SPRINKLERS SHALL COMPLY WITH THE AURORA FIRE DEPARTMENT AND NFPA 13 2010 & 2009 IFC EDITION.
3. SPRINKLERS LOCATED IN ACOUSTICAL CEILINGS SHALL BE LOCATED "CENTER OF TILE".
4. THE EXISTING SPRINKLER SYSTEM IN THIS SPACE HAS BEEN DESIGNED FOR LIGHT HAZARD (OFFICE), THE NEW TENANT (OFFICE) DOES NOT EXCEED THE DEMAND FOR THE EXISTING SPRINKLERS.
5. INSTALL PIPE HANGERS PER NFPA 13 2010 SECTION 9.2.2.1
6. SPACING LEGEND:
MAXIMUM 324 SQ.FT. (18'x18'), SPRINKLER SPACING FOR LIGHT HAZARD AREAS (ENTIRE PROJECT).
7. NEW SPRINKLER FITTINGS AND PIPE ARE AS FOLLOWS:
THREADED ARMOVERS: 1" - YOUNGSTOWN EZ-THREAD PIPE WITH THREADED FITTINGS.
8. PLAN KEY:
"R" = RELOCATE EXISTING SPRINKLER TO NEW LOCATION FOR ADEQUATE COVERAGE.
"E" = EXISTING UPRIGHT SPRINKLER TO REMAIN.
"N" = NEW PENDENT OR UPRIGHT SPRINKLER TO BE ADDED.
"P" = REMOVE EXISTING SPRINKLER AND PLUG THE OUTLET.
"MT" = INSTALL A MECHANICAL TEE FOR NEW OUTLET TO A SPRINKLER.
9. ALL EXISTING SPRINKLERS IN AREAS OUTSIDE OF THE SCOPE OF WORK SHALL REMAIN.
10. ALL PIPE LENGTHS SHOWN REFLECT FITTING TAKE-OUT
11. ALL FIRE ALARM WORK AND WIRING SHALL BE BY OTHERS.
12. FREEDOM FIRE PROTECTION'S SCOPE OF WORK SHALL BEGIN AT THE EXISTING BRANCHLINES.
13. EXISTING PIPE SHOWN AS A DASHED LINE. ALL NEW PIPE SHOWN AS BOLD WITH CUT LENGTHS.
14. ALL PENDENT SPRINKLERS SHALL BE LOCATED A MINIMUM OF 1'-0" FROM ALL MECHANICAL DIFFUSERS.
15. TOTAL NUMBER OF RELOCATED SPRINKLERS: 0
TOTAL NUMBER OF ADDED SPRINKLERS: 2
TOTAL NUMBER OF PLUGGED SPRINKLERS: 0

<h1>WALGREENS - AURORA</h1> <p>15301 EAST ILIFF AVE, AURORA, CO</p> <p>FIRE SPRINKLER PLAN</p>		<p>DATE: 7-14-2018</p>
<h2>FREEDOM FIRE PROTECTION, LLC</h2> <p>4026 MULLIGAN DRIVE, LONGMONT, CO, 80504</p> <p>- PHONE 303.827.2060 - FAX 303.827.2070 -</p> <p>STATE LICENSE #5-001</p>		<p>SCALE: 1/8"=1'</p>
<p>CHECKED BY: P. MORISON</p> <p>FILE NUMBER: SERVICE</p> <p><i>Paul Morison</i></p>		<p>JOB # SERVICE</p>
<p>NICET LEVEL III: 107845</p>		<p>DRAWN BY: LUIS R.</p>
		<p>SHEET # FP 1 OF 1</p>



Model F1FR Model F1FR Recessed Quick Response Extended Coverage Sprinklers

A complete line of UL Listed and FM Approved quick response extended coverage sprinklers for light hazard applications.

Horizontal Sidewall Sprinklers are approved for installation 4" - 12" (102mm - 305mm) below the ceiling.

Model F1FR QREC Sprinkler Types

- Extended Coverage Pendent
- Extended Coverage Horizontal Sidewall
 - EC-9 Deflector

Model F1FR QREC Recessed Sprinkler Types

- Recessed Extended Coverage Pendent
- Recessed Extended Coverage Horizontal Sidewall:
 - EC-9 Deflector

For Model F1FR QREC ½" K 5.6 (80) Sprinkler Types refer to Bulletin 028 for technical specifications and approvals.

Approval Organizations

1. Underwriters' Laboratories, Inc. (UL)
2. Underwriters Laboratories of Canada (ULC)
3. Factory Mutual Approvals (FM)
4. NYC MEA 258-93-E

UL Listing Category

Sprinklers, Automatic & Open
Quick Response Extended Coverage Sprinkler

UL Guide Number

VNIV

Note: Consult appropriate FM Installation Standards regarding limitations of room size, ceiling height and minimum wall fire resistance rating.

Product Description

Reliable Models F1FR QREC and F1FR QREC Recessed Sprinklers are quick response sprinklers which combine the durability for a standard sprinkler with the attractive low profile of a decorative sprinkler.

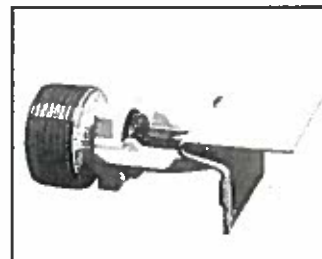
The Models F1FR QREC and F1FR QREC Recessed Automatic Sprinklers utilize a 3.0mm frangible glass bulb. These sprinklers have demonstrated response times in laboratory tests which are five times faster than standard response



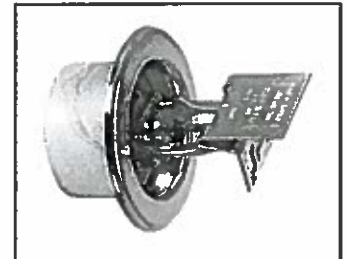
Extended Coverage
Pendent



Recessed Extended
Coverage Pendent



Extended Coverage
Horizontal Sidewall EC-9



Recessed Extended
Coverage Horizontal Sidewall
EC-9

sprinklers. This quick response enables these sprinklers to apply water to a fire much faster than standard sprinklers of the same temperature rating.

The glass bulb consists of an accurately controlled amount of special fluid hermetically sealed inside a precisely manufactured glass capsule. This glass bulb is specially constructed to provide fast thermal response. The balance of parts are made of brass, copper and beryllium nickel.

The temperature rating of the sprinkler is identified by the color of the glass bulb.

Application

Quick response sprinklers are used in fixed fire protection systems: Wet, Dry, Deluge or Preaction. Care must be exercised that the orifice size, temperature rating, deflector style and sprinkler type are in accordance with the latest published standards of the National Fire Protection Association or the approving authority having jurisdiction. Quick response sprinklers are intended for installation as specified in NFPA 13.

Model F1FR Quick Response Extended Coverage Pendent Sprinkler

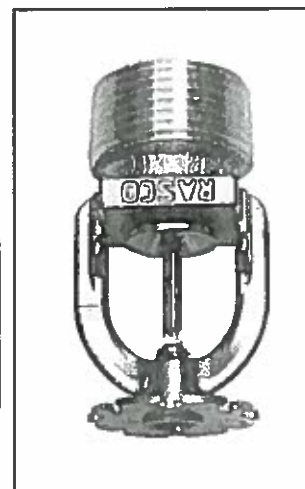
Deflector: EC

Installation Wrench: Model D Sprinkler Wrench

Approval Type: Quick Response Extended Coverage-Light Hazard Occupancy

Installation Data:

Nominal Orifice	Thread Size	"K" Factor		Sprinkler Length	Temperature Rating	Approval Organizations	Sprinkler Identification Number (SIN)
		US	Metric				
17/32" (20mm)	3/4" NPT (R3/4)	8.0	115	2.2" (56.1mm)	135°F (57°C) 155°F (68°C)	1,2,3,4	R4842



Model F1FR Recessed Quick Response Extended Coverage Pendent Sprinkler

Deflector: EC

Installation Wrench: Model GFR2 Sprinkler Wrench

Approval Type: Quick Response Extended Coverage-Light Hazard Occupancy

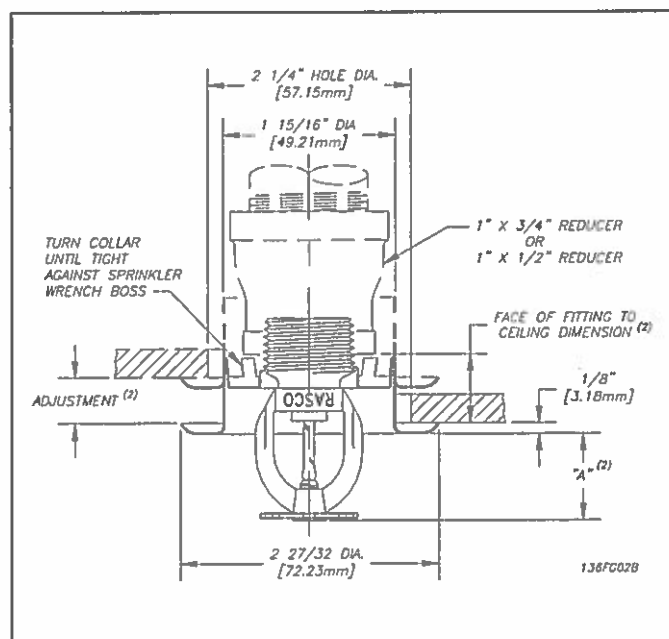
Installation Data:

Nominal Orifice	Thread Size	"K" Factor		Sprinkler Length	Temperature Rating	Approval ⁽¹⁾ Organizations	Sprinkler Identification Number (SIN)
		US	Metric				
17/32" (20mm)	3/4" NPT (R3/4)	8.0	115	2.2" (56.1mm)	135°F (57°C) 155°F (68°C)	1, 2, 3, 4	R4842

⁽¹⁾ Refer to escutcheon data table for dimensions.

COVERAGE AREA		
Flow Rate gpm (L/min)	Pressure, psi (bar)	Maximum Coverage Area Width x Length ft. x ft. (m x m)
	K = 8.0 (115)	
26 (98.4)	10.6 (0,7)	16 x 16 (4.9 x 4.9)
33 (125.0)	17.0 (1,2)	18 x 18 (5.5 x 5.5)
40 (151.4)	25.0 (1,7)	20 x 20 (6.0 x 6.0) ⁽²⁾

⁽²⁾ UL/ULC Listed for both Pendent and Recessed Pendent at 135°F (57°C) only.



Model F1FR Quick Response Extended Coverage Horizontal Sidewall Sprinkler

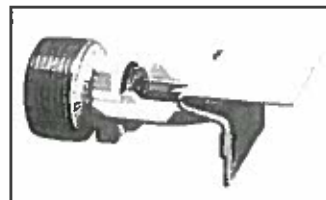
Deflector: EC-9

Installation Wrench: Model D Sprinkler Wrench

Approval Type: Quick Response Extended Coverage-Light Hazard Occupancy

Installation Data: See Table 1 below for Coverage Area

Nominal Orifice	Thread Size	"K" Factor		Sprinkler Length	Approval ⁽²⁾ Organizations	Temperature Rating	Sprinkler Identification Number (SIN)
		US	Metric				
1 ⁷ / ₃₂ " (20mm)	3/4" NPT (R3/4)	8.0	115	2.85 (72.4mm)	1,2,3,4	135°F (57°C) 155°F (68°C) 175°F (78°C)	R4862



Model F1FR Recessed Quick Response Extended Coverage Horizontal Sidewall Sprinkler

Deflector: EC-9

Installation Wrench: Model GFR2 Sprinkler Wrench

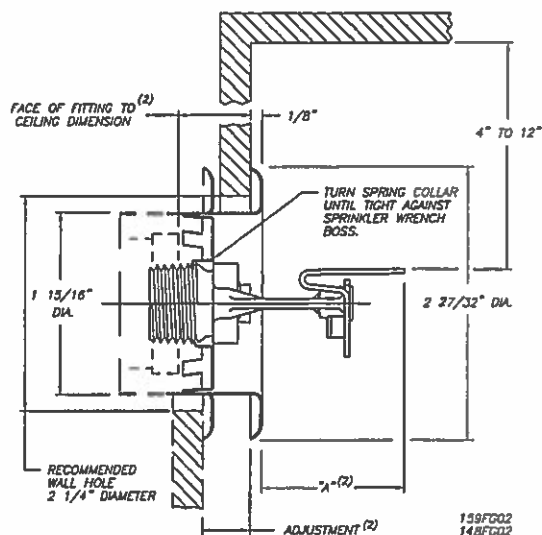
Approval Type: Quick Response Extended Coverage-Light Hazard Occupancy

Table 1

COVERAGE AREA								
Flow Rate gpm (L/min)		Pressure psi (bar)		Maximum Coverage Area Width x Length ft. x ft. (m x m)	Temperature Rating ⁽¹⁾	Approval ⁽²⁾ Organizations		Deflector to Ceiling Dimension Min. - Max. Inches (mm)
UL	FM	UL	FM			F1	F2	
26 (98.4)	-	10.6 (0.7)	-	16 x 16 (4.9 x 4.9)	135°F (57°C)	1, 2, 4	1, 2, 3, 4	6 - 12 (153 - 305)
29 (109.8)	32 (121.1)	13.1 (0.9)	16.0 (1.1)	16 x 16 (4.9 x 4.9)	135°F (57°C)			4 - 12 (102 - 305)
29 (109.8)	36 (136.3)	13.1 (0.9)	20.2 (1.4)	16 x 18 (4.9 x 5.5)	155°F (68°C)			4 - 12 (102 - 305)
32 (121.1)	40 (151.4)	16.0 (1.1)	25.0 (1.7)	16 x 20 (4.9 x 6.0)	155°F (68°C)			4 - 12 (102 - 305)
36 (136.3)	44 (166.6)	20.2 (1.4)	30.2 (2.1)	16 x 22 (4.9 x 6.7)	175°F (78°C)			4 - 12 (102 - 305)
39 (147.6)	48 (181.7)	23.8 (1.6)	36.0 (2.5)	16 x 24 (4.9 x 7.3)	175°F (78°C)	1, 2	1, 2	4 - 12 (102 - 305)
33 (124.9)	-	17.0 (1.2)	-	18 x 18 (5.5 x 5.5)	135°F (57°C)			4 - 12 (102 - 305)
39 (147.6)	-	23.8 (1.6)	-	14 x 26 (4.3 x 7.9)	135°F (57°C)			4 - 6 (102 - 153)
40 (151.4)	-	25.0 (1.7)	-	18 x 22 (5.5 x 6.7)	135°F (57°C)			4 - 12 (102 - 305)
46 (174.1)	-	33.1 (2.25)	-	14 x 26 (4.3 x 7.9)	135°F (57°C)			6 - 12 (153 - 305)
33 (124.9)	-	17.0 (1.2)	-	18 x 18 (5.5 x 5.5)	155°F (68°C)			4 - 12 (102 - 305)
40 (151.4)	-	25.0 (1.7)	-	18 x 22 (5.5 x 6.7)	155°F (68°C)			4 - 12 (102 - 305)
46 (174.1)	-	33.1 (2.25)	-	14 x 26 (4.3 x 7.9)	155°F (68°C)			6 - 12 (153 - 305)

⁽¹⁾ FM Approval of recessed sprinkler - 135°F (57°C) and 155°F (68°C) only.

⁽²⁾ Refer to escutcheon data table for dimensions.



Quick response sprinkler are intended for installation as specified in NFPA 13. Quick response sprinklers and standard response sprinklers should not be intermixed.

The Model F1FR Recessed QREC Sprinklers are to be installed as shown. The Model F1 or F2 Escutcheons illustrated are the only recessed escutcheons to be used with the Model F1FR Sprinklers. The use of any other recessed escutcheon will void all approvals and negate all warranties.

When installing Model F1FR QREC Sprinklers, use the Model D Sprinkler Wrench. When installing Model F1FR QREC Recessed Pendant or Sidewall Sprinklers, use the Model GFR1 Sprinkler Wrench. Any other type of wrench may damage these sprinklers.

Glass bulb sprinklers have orange bulb protectors to minimize bulb damage during shipping, handling and installation. REMOVE THIS PROTECTION AT THE TIME THE SPRINKLER SYSTEM IS PLACED IN SERVICE FOR FIRE PROTECTION. Removal of the protectors before this time may leave the bulb vulnerable to damage. RASCO wrenches are designed to install sprinklers when covers are in place. REMOVE PROTECTORS BY UNDOING THE CLASP BY HAND. DO NOT USE TOOLS TO REMOVE THE PROTECTORS.

Maintenance

The Models F1FR QREC and F1FR QREC Recessed Sprinklers should be inspected and the sprinkler system maintained in accordance with NFPA 25. Do not clean sprinklers with soap and water, ammonia or any other cleaning fluids. Remove dust by using a soft brush or gentle vacuuming. Remove any sprinkler which has been painted (other than factory applied) or damaged in any way. A stock of spare sprinklers should be maintained to allow quick replacement of damaged or operated sprinklers. Prior to installation, sprinklers should be maintained in the original cartons and packaging until used to minimize the potential for damage to sprinklers that would cause improper operation or non-operation.

Temperature Ratings

Classification	Sprinkler Rating		Maximum Ambient Temp.		Bulb Color
	°F	°C	°F	°C	
Ordinary	135	57	100	38	Orange
Ordinary	155	68	100	38	Red
Intermediate	175	79	150	66	Yellow

Sprinkler Types

Extended Coverage Pendant

Extended Coverage Sidewall

- EC-9 HSW Deflector

Recessed Extended Coverage Pendant

Recessed Extended Coverage Sidewall

- EC-9 HSW Deflector

Finishes⁽¹⁾

Standard Finishes ⁽¹⁾	
Sprinkler	Escutcheon
Bronze Chrome White & Black Polyester ⁽³⁾	Brass Chrome White
Special Application Finishes	
Sprinkler ⁽²⁾	Escutcheon
Electroless Nickel PTFE(Teflon®) ⁽³⁾ Bright Brass Black Plating Black Paint Off White Satin Chrome	Electroless Nickel PTFE (Teflon®)* Bright Brass Black Plating Black Paint Off White Chrome Dull

⁽¹⁾ Other colors and finishes are available on special order. Consult factory for details.

⁽²⁾ FM Approval limited to bronze, bright and satin chrome plated, and polyester coated only.

⁽³⁾ cULus Listed Corrosion Resistant Sprinkler

Escutcheon Data

Escutcheon Model	Adjustment	"A" Dimension	Face of Fitting to Ceiling or Wall Dimension
F1	3/4" (19mm)	3/4" (19mm) ⁽¹⁾ 1 3/8" (35mm) ⁽²⁾	3/16" (5mm) - 15/16" (24mm)
F2	1/2" (13mm)	1" (25mm) ⁽¹⁾ 1 9/16" (40mm) ⁽²⁾	3/16" (5mm) - 1 1/16" (18mm)

⁽¹⁾ EC Pendant

⁽²⁾ EC HSW

Ordering Information

Specify:

1. Sprinkler Model
2. Sprinkler Type
3. Orifice Size
4. Deflector Type
5. Temperature Rating
6. Sprinkler Finish
7. Escutcheon Type
8. Escutcheon Finish (where applicable)

Note: When Model F1FR Recessed sprinklers are ordered, the sprinklers and escutcheons are packaged separately.

*DuPont Registered Trademark

The equipment presented in this bulletin is to be installed in accordance with the latest published Standards of the National Fire Protection Association, Factory Mutual Research Corporation, or other similar organizations and also with the provisions of governmental codes or ordinances whenever applicable.

Products manufactured and distributed by Reliable have been protecting life and property for over 90 years, and are installed and serviced by the most highly qualified and reputable sprinkler contractors located throughout the United States, Canada and foreign countries.

Manufactured by



The Reliable Automatic Sprinkler Co., Inc.

(800) 431-1588

(800) 848-6051

(914) 829-2042

www.reliable-sprinkler.com

Sales Offices

Sales Fax

Corporate Offices

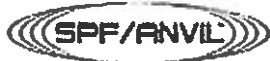
Internet Address



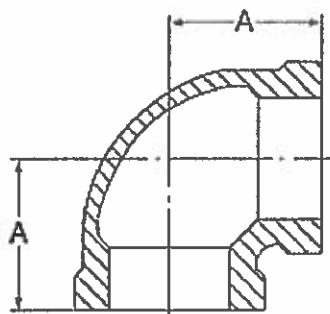
Recycled Paper

Revision lines indicate updated or new data.

EG. Printed in U.S.A. 01/14 P/N 9999970142



Malleable Iron Screwed Fittings - Class 150



For Listings Approval Details and Limitations, visit our website at www.anvilintl.com or contact an Anvil Sales Representative

90° ELBOW

Nominal Size	Dimension A	Approx. Wt. Each
<i>kn. (mm)</i>	<i>kn. (mm)</i>	<i>Lbs. (Kg)</i>
1/8	0.69	0.06
1/8	17.53	0.03
1/4	0.81	0.10
1/4	20.57	0.05
3/8	0.95	0.15
3/8	24.13	0.07
1/2	1.12	0.22
1/2	28.45	0.10
3/4	1.31	0.36
3/4	33.27	0.16
1	1.50	0.57
1	38.10	0.26
1 1/4	1.75	0.87
1 1/4	44.45	0.40
1 1/2	1.94	1.16
1 1/2	49.23	0.53
2	2.25	1.81
2	57.15	0.82
2 1/2	2.70	3.23
2 1/2	68.58	1.47
3	3.08	4.82
3	78.23	2.19
4	3.79	8.41
4	96.27	3.82
6	5.13	19.96
6	130.50	9.05

MATERIAL SPECIFICATIONS

Dimensional: Fittings: ASME B16.3
Unions: ASME B16.39
Bushings/Plugs: ASME B16.14

Material: ASTM A-197

Galvanizing: ASTM A-153 (Hot Dip Galvanizing)

Threading*: ASME B1.20.1

Pressure Rating: Fittings: ASME B16.3
Unions: ASME B16.39
Bushings/Plugs: ASME B16.14

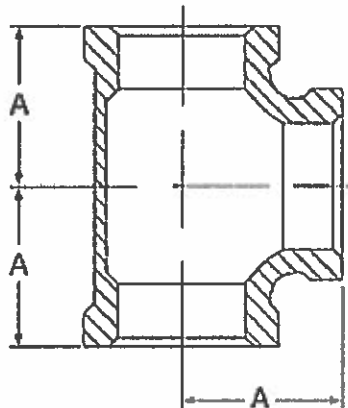
Pressure Testing: All malleable iron fittings are tested for through wall porosity using an air under water process.

Agency Approvals: All malleable iron fittings and unions are UL Listed and FM Approved.

* British Standard threading per BS 21 available upon request.



Malleable Iron Screwed Fittings - Class 150



For listings Approval Details and Limitations, visit our website at www.anvilintl.com or contact an Anvil® Sales Representative

STRAIGHT TEE

Nominal Size	Dimension A	Approx. Wt. Each
<i>ln. (mm)</i>	<i>ln. (mm)</i>	<i>lbs. (kg)</i>
1/8	0.69	0.09
1/8	17.53	0.04
1/4	0.81	0.14
1/4	20.57	0.06
3/8	0.95	0.21
3/8	24.13	0.10
1/2	1.12	0.31
1/2	28.43	0.14
3/4	1.31	0.50
3/4	33.27	0.23
1	1.50	0.79
1	38.10	0.36
1 1/4	1.75	1.19
1 1/4	44.45	0.54
1 1/2	1.94	1.57
1 1/2	49.28	0.71
2	2.25	2.43
2	57.15	1.10
2 1/2	2.70	4.33
2 1/2	68.58	1.96
3	3.08	6.37
3	78.23	2.89
4	3.79	11.03
4	96.27	5.00
6	5.13	25.98
6	130.50	11.73

MATERIAL SPECIFICATIONS

Dimensional: Fittings: ASME B16.3
Unions: ASME B16.39
Bushings/Plugs: ASME B16.14

Material: ASTM A-197

Galvanizing: ASTM A-153 (Hot Dip Galvanizing)

Threading*: ASME B1.20.1

Pressure Rating: Fittings: ASME B16.3
Unions: ASME B16.39
Bushings/Plugs: ASME B16.14

Pressure Testing: All malleable iron fittings are tested for through wall porosity using an air under water process.

Agency Approvals: All malleable iron fittings and unions are UL Listed and FM Approved.

* British Standard threading per BS 21 available upon request.

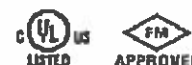
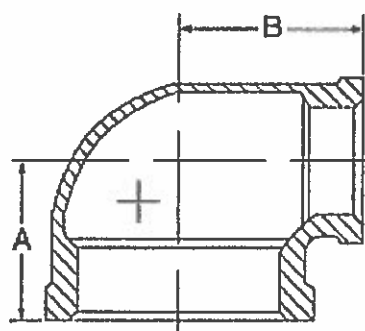
REDUCING 90° ELBOW

RSN: 1032857

Permit #: 2015-985509-LT



Malleable Iron Screwed Fittings - Class 150



For Listings Approval Details and Limitations, visit our website at www.anvilinc.com or contact an Anvil Sales Representative

REDUCING 90° ELBOW

Nominal Size	Dimensions		Approx. Wt. Each
	A	B	
In. (mm)	In. (mm)	In. (mm)	Lbs. (kg)
1/4 x 1/8	0.74 18.80	0.76 19.30	0.08 0.04
1/2 x 1/8	0.81 20.57	0.85 21.57	0.11 0.05
3/8 x 1/4	0.88 22.35	0.90 22.86	0.13 0.06
1/2 x 1/4	0.97 24.64	0.98 24.83	0.16 0.07
3/4 x 3/8	1.04 26.42	1.03 26.16	0.19 0.09
1/2 x 3/8	1.12 28.45	1.13 28.70	0.26 0.12
3/4 x 1/2	1.20 30.48	1.22 30.92	0.29 0.13
1 x 3/8	1.18 29.97	1.26 32.00	0.35 0.16
1 x 1/2	1.26 32.00	1.36 34.54	0.42 0.19
1 x 3/4	1.37 34.80	1.45 36.83	0.47 0.21
1 1/4 x 1/2	1.34 34.04	1.53 38.86	0.54 0.24
1 1/4 x 3/4	1.45 36.83	1.62 41.15	0.62 0.28
1 1/4 x 1	1.58 40.13	1.67 42.42	0.73 0.33
1 1/2 x 1/2	1.38 35.05	1.65 41.91	0.65 0.29
1 1/2 x 3/4	1.52 38.61	1.75 44.45	0.74 0.34
1 1/2 x 1	1.65 41.91	1.80 45.72	0.88 0.40
1 1/2 x 1 1/4	1.82 46.23	1.88 47.75	1.03 0.47
2 x 1/2	1.50 38.10	1.89 48.01	0.93 0.42
2 x 3/4	1.60 40.64	1.97 50.04	1.04 0.47
2 x 1	1.73 43.94	2.02 51.81	1.28 0.58
2 x 1 1/4	1.90 48.26	2.10 53.34	1.36 0.62
2 x 1 1/2	2.02 51.31	2.16 54.86	1.51 0.68

MATERIAL SPECIFICATIONS

Dimensional: Fittings: ASME B16.3
Unions: ASME B16.39
Bushings/Plugs: ASME B16.14

Material: ASTM A-197

Galvanizing: ASTM A-153 (Hot Dip Galvanizing)

Threading*: ASME B1.20.1

Pressure Rating: Fittings: ASME B16.3
Unions: ASME B16.39
Bushings/Plugs: ASME B16.14

Pressure Testing: All malleable iron fittings are tested for through wall porosity using an air under water process.

Agency Approvals: All malleable iron fittings and unions are UL Listed and FM Approved.

* British Standard threading per BS 21 available upon request.

REDUCING 90° ELBOW

Nominal Size	Dimensions		Approx. Wt. Each
	A	B	
In. (mm)	In. (mm)	In. (mm)	Lbs. (kg)
2 1/2 x 1 1/2	2.16 54.86	2.51 63.75	2.20 1.00
2 1/2 x 2	2.39 60.71	2.60 66.04	2.55 1.16
3 x 2	2.52 64.01	2.89 73.41	3.35 1.52
3 x 2 1/2	2.83 71.86	2.99 75.95	4.12 1.87
4 x 2	2.72 69.09	3.43 87.12	5.01 2.27
4 x 3	3.30 83.77	3.60 91.44	6.65 3.02



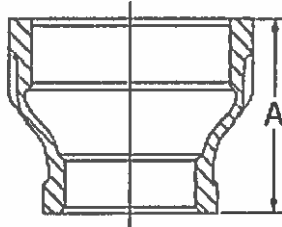
REDUCING COUPLING

RSN: 1032857

Permit #: 2015-985509-LT



Malleable Iron Screwed Fittings - Class 150



For Listings Approval Details and Limitations visit our website at www.anvilint.com or contact an Anvil Sales Representative

MATERIAL SPECIFICATIONS

Dimensional: Fittings: ASME B16.3
Unions: ASME B16.39
Bushings/Plugs: ASME B16.14

Material: ASTM A-197

Galvanizing: ASTM A-153 (Hot Dip Galvanizing)

Threading*: ASME B1.20.1

Pressure Rating: Fittings: ASME B16.3
Unions: ASME B16.39
Bushings/Plugs: ASME B16.14

Pressure Testing: All malleable iron fittings are tested for through wall porosity using an air under water process.

Agency Approvals: All malleable iron fittings and unions are UL Listed and FM Approved.

REDUCING COUPLING

Nominal Size	Dimension A	Approx. Wt. Each
<i>ln. (mm)</i>	<i>ln. (mm)</i>	<i>lbs. (kg)</i>
1/4 x 1/4 8 x 8	1.00 25.40	0.07 0.03
3/8 x 1/4 10 x 8	1.13 28.70	0.09 0.04
3/8 x 1/2 10 x 12	1.13 28.70	0.10 0.05
1/2 x 1/4 15 x 8	1.25 31.75	0.13 0.06
1/2 x 1/2 15 x 12	1.25 31.75	0.13 0.06
1/2 x 3/4 15 x 18	1.25 31.75	0.14 0.06
3/4 x 1/4 20 x 8	1.44 36.58	0.18 0.08
3/4 x 1/2 20 x 12	1.44 36.58	0.20 0.09
3/4 x 3/4 20 x 18	1.44 36.58	0.21 0.10
3/4 x 1 20 x 24	1.44 36.58	0.22 0.10
1 x 1/4 25 x 12	1.69 42.93	0.34 0.15
1 x 1/2 25 x 18	1.69 42.93	0.36 0.16
1 1/4 x 1/2 32 x 15	2.06 52.32	0.47 0.21
1 1/4 x 3/4 32 x 20	2.06 52.32	0.51 0.23
1 1/4 x 1 32 x 25	2.06 52.32	0.57 0.26
1 1/2 x 1/2 40 x 15	2.31 58.67	0.62 0.28
1 1/2 x 3/4 40 x 20	2.31 58.67	0.66 0.30
1 1/2 x 1 40 x 25	2.31 58.67	0.73 0.33
1 1/2 x 1 1/4 40 x 32	2.31 58.67	0.80 0.36

REDUCING COUPLING

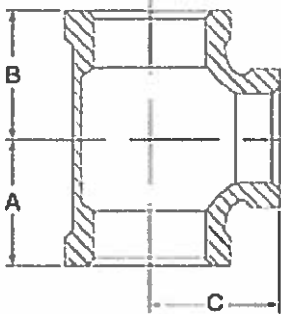
Nominal Size	Dimension A	Approx. Wt. Each
<i>ln. (mm)</i>	<i>ln. (mm)</i>	<i>lbs. (kg)</i>
2 x 1/2 50 x 15	2.81 71.37	0.94 0.42
2 x 3/4 50 x 20	2.81 71.37	0.99 0.45
2 x 1 50 x 25	2.81 71.37	1.03 0.47
2 x 1 1/4 50 x 32	2.81 71.37	1.17 0.53
2 x 1 1/2 50 x 40	2.81 71.37	1.25 0.57
2 1/2 x 1 1/4 65 x 32	3.25 82.55	1.81 0.82
2 1/2 x 1 1/2 65 x 40	3.25 82.55	1.90 0.86
2 1/2 x 2 65 x 50	3.25 82.55	2.04 0.93
3 x 1 80 x 25	3.69 93.73	2.48 1.12
3 x 1 1/4 80 x 32	3.69 93.73	2.55 1.16
3 x 1 1/2 80 x 40	3.69 93.73	2.67 1.21
3 x 2 80 x 50	3.69 93.73	2.78 1.26
3 x 2 1/2 80 x 65	3.69 93.73	3.23 1.47
4 x 2 100 x 50	4.38 111.25	4.43 2.01
4 x 2 1/2 100 x 65	4.38 111.25	4.87 2.21
4 x 3 100 x 80	4.38 111.25	5.29 2.40

* British Standard threading per BS 21 available upon request.





Malleable Iron Screwed Fittings - Class 150



For Listing Approval Details and Limitations, visit our website at www.anvilintl.com or contact an Anvil Sales Representative.

MATERIAL SPECIFICATIONS

Dimensional: Fittings: ASME B16.3
Unions: ASME B16.39
Bushings/Plugs: ASME B16.14

Material: ASTM A-197

Galvanizing: ASTM A-153 (Hot Dip Galvanizing)

Threading*: ASME B1.20.1

Pressure Rating: Fittings: ASME B16.3
Unions: ASME B16.39
Bushings/Plugs: ASME B16.14

Pressure Testing: All malleable iron fittings are tested for through wall porosity using an air under water process.

Agency Approvals: All malleable iron fittings and unions are UL Listed and FM Approved.

* British Standard threading per BS 21 available upon request.

REDUCING TEE

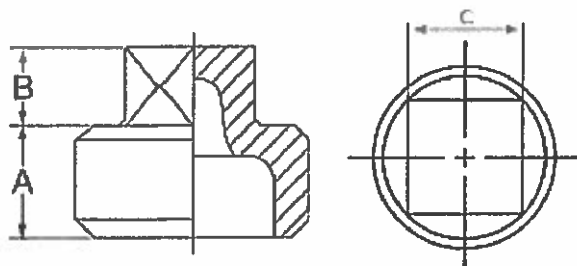
Nominal Size			Dimensions			Approx. Wt. Each
In. (mm)			A In. (mm)	B In. (mm)	C In. (mm)	Lbs. (kg)
1/4	1/8	1/4	0.97	0.97	0.98	0.24
		5	24.64	24.64	24.69	0.11
		3/8	1.04	1.04	1.03	0.27
		10	26.42	26.42	26.18	0.12
		3/4	1.22	1.22	1.20	0.37
1/2	1/8	20	30.99	30.99	30.45	0.12
		1	1.36	1.36	1.26	0.49
		25	34.54	34.54	32.00	0.22
	1/2	15	1.20	1.12	1.22	0.38
		35	30.48	26.16	28.45	0.17
3/4	1/2	20	1.31	1.22	1.31	0.45
		25	33.27	28.45	33.27	0.20
	3/4	10	1.05	1.05	1.08	0.36
		5	26.67	26.67	27.43	0.16
		3/8	1.12	1.12	1.13	0.39
1	3/4	10	1.12	1.12	1.13	0.39
		25	28.45	28.45	28.20	0.18
		15	1.20	1.20	1.22	0.43
	1	25	30.45	30.45	30.99	0.20
		1	1.45	1.45	1.37	0.62
1 1/4	3/4	25	36.23	36.23	28.45	0.28
		1	1.50	1.18	1.50	0.63
	1	25	38.10	27.97	33.10	0.22
		15	1.26	1.12	1.36	0.48
		35	32.00	28.45	24.54	0.22
1 1/2	1	20	1.37	1.22	1.45	0.56
		35	34.80	28.45	34.54	0.25
		1	1.50	1.36	1.50	0.67
	1 1/4	25	38.10	34.54	38.10	0.30
		15	1.26	1.20	1.36	0.53
2	1 1/4	25	1.37	1.31	1.45	0.61
		35	34.80	33.27	36.83	0.28
		1	1.50	1.45	1.50	0.71
	2	25	38.10	36.83	38.10	0.32
		15	1.18	1.18	1.27	0.57
2 1/2	2	10	1.26	1.26	1.36	0.62
		35	32.00	32.00	24.54	0.25
		15	1.37	1.37	1.45	0.69
	2 1/2	20	1.67	1.67	1.58	0.94
		35	42.42	42.42	40.13	0.42
3	2 1/2	40	1.80	1.80	1.65	1.07
		45	45.72	45.72	41.91	0.49
		2	2.02	2.02	1.73	1.45
	3	50	51.31	51.31	43.91	0.46

REDUCING TEE

Nominal Size			Dimensions			Approx. Wt. Each
In. (mm)			A In. (mm)	B In. (mm)	C In. (mm)	Lbs. (kg)
1/4	1/8	1	1.58	1.36	1.67	0.82
		25	40.13	34.54	42.42	0.27
		1 1/4	1.75	1.53	1.75	0.95
		37	44.45	38.86	44.45	0.43
		3/4	1.45	1.31	1.62	0.75
1/2	1/8	20	36.83	33.27	41.15	0.34
		1	1.58	1.45	1.67	0.87
		25	40.13	36.83	42.42	0.39
		1 1/4	1.75	1.62	1.75	1.00
		37	44.45	41.15	44.45	0.45
3/4	1/2	15	1.34	1.26	1.53	0.74
		35	34.01	32.00	35.66	0.34
		3/4	1.45	1.37	1.62	0.82
		20	36.83	28.45	41.15	0.27
		1	1.58	1.50	1.67	0.94
1	3/4	25	40.13	35.10	42.42	0.43
		1 1/4	1.75	1.67	1.75	1.08
		37	44.45	42.42	44.45	0.49
		3/4	1.26	1.26	1.44	0.78
		10	32.00	32.00	35.58	0.35
1 1/4	1	15	1.34	1.34	1.53	0.84
		35	34.01	34.01	38.86	0.38
		3/4	1.45	1.45	1.62	0.92
		20	36.83	36.83	41.15	0.42
		1	1.58	1.58	1.67	1.04
1 1/2	1 1/4	25	40.13	40.13	42.42	0.47
		1 1/2	1.88	1.88	1.82	1.34
		40	47.75	47.75	46.23	0.61
		2	2.10	2.10	1.90	1.65
		50	53.34	53.34	45.26	0.75



Malleable Iron Screwed Fittings - Class 150



For Listings Approval Details and Limitations,
 visit our website at www.anvilil.com or
 contact an Anvil Sales Representative

PLUG

	Nominal Size	Dimensions			Approx. Wt. Each
		A	B	C	
	In. (mm)	In. (mm)	In. (mm)	In. (mm)	Lbs. (kg)
Solid	1/4	0.44	0.28	0.38	0.04
	5	11.18	7.11	9.65	0.02
Solid	3/8	0.48	0.31	0.44	0.06
	10	12.19	7.61	11.18	0.02
Cored	1/2	0.56	0.38	0.56	0.08
	15	14.22	9.65	14.22	0.04
Cored	3/4	0.63	0.44	0.63	0.13
	20	16.00	11.18	16.00	0.06
Cored	1	0.75	0.50	0.81	0.20
	25	19.05	12.70	20.57	0.09
Cored	1 1/4	0.80	0.56	0.94	0.32
	32	20.32	14.22	23.86	0.15
Cored	1 1/2	0.83	0.62	1.13	0.43
	40	21.05	15.75	28.70	0.20
Cored	2	0.88	0.68	1.31	0.67
	50	22.35	17.27	33.27	0.30
Cored	2 1/4	1.07	0.74	1.50	1.11
	65	27.16	18.80	38.10	0.50
Cored	3	1.13	0.80	1.69	1.53
	80	28.70	20.32	42.93	0.69
Bar Plug	4	1.22	1.00	—	2.71
	100	30.99	25.40	—	1.23
Bar Plug	6	1.40	1.25	—	4.00
	150	35.54	31.75	—	1.81

MATERIAL SPECIFICATIONS

Dimensional: Fittings: ASME B16.3
 Unions: ASME B16.39
 Bushings/Plugs: ASME B16.14

Material: ASTM A-197

Galvanizing: ASTM A-153 (Hot Dip Galvanizing)

Threading*: ASME B1.20.1

Pressure Rating: Fittings: ASME B16.3
 Unions: ASME B16.39
 Bushings/Plugs: ASME B16.14

Pressure Testing: All malleable iron fittings are tested for
 through wall porosity using an air under water process.

Agency Approvals: All malleable iron fittings and unions
 are UL Listed and FM Approved.

* British Standard threading per BS 21 available upon request.

FireLock® Outlet-T

STYLE 922

RSN: 1032857

Permit #: 2015-985509-LT



WARNING



- Read and understand all instructions before attempting to install any Victaulic piping products.
 - Wear safety glasses, hardhat, and foot protection.
- Failure to follow these instructions could result in serious personal injury and/or property damage.

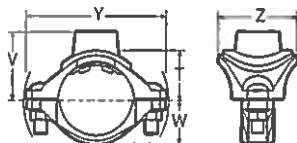
WARNING



- Depressurize and drain the piping system before attempting to install, remove, or adjust any Victaulic piping products.
- Failure to follow this instruction could result in serious personal injury and/or property damage.

The Style 922 FireLock Outlet-T is designed for direct connection of sprinkler heads, drop nipples, sprigs, drains, gauges, and other outlet products. The Style 922 FireLock Outlet-T is UL Listed and FM Approved up to 300psi/2068 kPa and VdS Approved up to 16Bar/232 psi at ambient temperatures that are typical for fire protection systems.

PRODUCT DATA



Nominal Size Inches/mm		Hole Diameter	Dimensions -- Inches/millimeters					Approx. Wgt. Each
Run x Branch FPT†		+0.06/-1.5 -0.00/-0.0	T*	Y	W	Y	Z	lbs/kg
1 1/4 32	x	1/2	1.30	1.83	1.10	3.87	2.56	1.0
		15	30.2	33.0	46.5	27.9	98.3	0.45
		3/4	1.28	1.83	1.10	3.87	2.56	1.1
		20	30.2	32.5	46.5	27.9	98.3	0.50
		1	1.52	2.18	1.10	3.87	2.56	1.2
1 1/2 40	x	1/2	1.42	1.95	1.22	4.08	2.56	1.2
		15	30.2	36.1	49.5	31.0	103.6	0.54
		3/4	1.40	1.95	1.22	4.08	2.56	1.2
		20	30.2	35.6	49.5	31.0	103.6	0.54
		1	1.64	2.30	1.22	4.08	2.56	1.3
2 50	x	1/2	1.66	2.19	1.46	4.60	2.56	1.3
		15	30.2	42.2	55.6	37.1	116.8	0.59
		3/4	1.64	2.19	1.46	4.60	2.56	1.4
		20	30.2	41.7	55.6	37.1	116.8	0.64
		1	1.88	2.54	1.46	4.60	2.56	1.5
2 1/2 65	x	1/2	1.91	2.44	1.71	5.40	2.56	1.6
		15	30.2	48.5	62.0	43.4	137.2	0.73
		3/4	1.89	2.44	1.71	5.40	2.56	1.6
		20	30.2	48.0	62.0	43.4	137.2	0.73
		1	2.13	2.79	1.71	5.40	2.56	1.6
76.1 mm	x	1/2	1.91	2.44	1.71	5.50	2.56	1.6
		15	30.2	48.5	62.0	43.4	139.7	0.73
		3/4	1.89	2.44	1.71	5.50	2.56	1.6
		20	30.2	48.0	62.0	43.4	139.7	0.73
		1	2.13	2.79	1.71	5.50	2.56	1.7
		25	30.2	54.1	70.9	43.4	139.7	0.80

† Victaulic female threaded products are designed to accommodate standard NPT or BSPT (Optional) male pipe threads only. Use of male threaded products with special features, such as probes, dry pendent sprinkler heads, etc., should be verified as suitable for use with this Victaulic product. Failure to verify suitability in advance may result in assembly problems or leakage.

* Center of run to engaged pipe end for NPT threads (dimensions are approximate).



Youngstown Tube

"Quality by the Foot"



Schedule 30 Sprinkler Pipe "EZ-Thread"®

Youngstown Tube manufactures EZ-Thread® (schedule 30) pipe in sizes 1" thru 2" using only high quality domestic steel coils. This ensures a uniform superior product for threading, roll grooving, welding or plain end uses. Youngstown Tube's EZ-Thread® pipe is produced under ASTM A135/A795 Type E, Grade A, NH standards. Every piece is Eddy-Current tested and conforms to internal SPC testing and recording.

EZ-Thread® is manufactured to tighter O.D. tolerances and incorporates lighter gauge steel than standard schedule 40 pipe. This creates a cost effective threadable pipe which has UL CRR (Corrosion Resistance Ratio) value in excess of standard schedule 40 product.

Youngstown Tube EZ-Thread® steel sprinkler pipe is coated with a waterbased black enamel coating, YTC Guard® antimicrobial coating and a continuous color coded *blue* stencil, and stored **indoors** ready for immediate shipment.

Approvals: UL Listed, CUL Listed, FM Approved

Youngstown Tube schedule 30 pipe meets the rigorous testing and certification processes of Underwriters Laboratory and Factory Mutual for steel sprinkler pipe with working pressures of 300 psi or less. It also meets the requirements of NFPA 13.

"EZ-Thread"® Schedule 30 *

Pipe Size	Pipe OD	Pipe ID	Nominal Wall	Weight per Foot	Standard Length	Pieces per Bundle	Feet per Bundle	Weight per Bundle	UL Threaded CRR
1	1.295	1.095	.106	1.34	21	61	1,281	1,716	1.14
1 ¼	1.645	1.420	.114	1.86	21	61	1,281	2,382	1.12
1 ½	1.892	1.653	.121	2.28	21	44	924	2,106	1.06
2	2.368	2.116	.127	3.03	21	37	777	2,354	1.11

* EZ-Thread® pipe can not be cut-grooved.

Youngstown Tube Company
401 Andrews Avenue
Youngstown, Ohio 44505
1-866-The-Tube
www.youngstowntube.com

Project:

Contractor:

Submitted By:

Date Submitted:

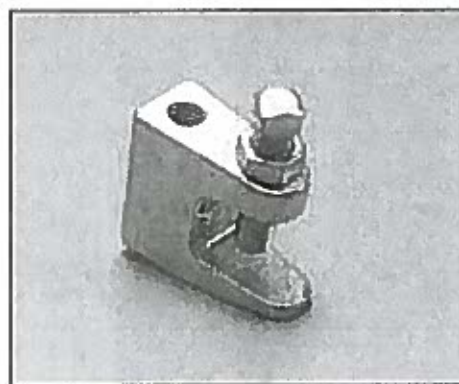
BEAM CLAMP 300

RSN: 1032857

Permit #: 2015-985509-LT

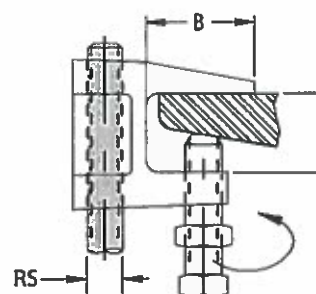
Universal Ductile Iron Beam Clamp

- Size Range: 3/8", 1/2", 5/8", 3/4" and 7/8" rod sizes
- Surface Finish: Black, Electro-zinc plated
- Structural attachment to top or bottom of metal beams, purlins, channel, or angle iron
- Setscrew made of hardened steel
- For retainer straps see Models 300C and 035RS
- Available with a HD finish by special order
- Conforms with Federal Specification WW-H-171 (Type 23), Manufacturers Standardization Society ANSI/MSS-SP-58 (Type 19 & 23), install in accordance with ANSI/MSS-SP-69
- Setscrew must be tightened and torqued onto the sloped side of the I-beam



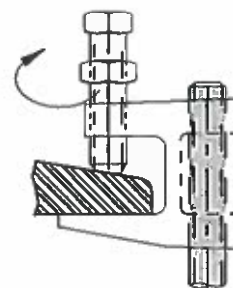
Part Number	RS	A	B	Set Screw	Max. Rec. Load (lbs)	
Plain Finish					Top	Bottom
3000037PL*	3/8	3/4"	1-1/8"	3/8"	500	250
3000050PL*	1/2	3/4"	1-1/8"	7/16"	950	760
3000062PL	5/8	3/4"	1-1/8"	3/8"	950	760
3000075PL	3/4	3/4"	1-1/8"	3/8"	950	760
3000087PL	7/8	3/4"	1-1/8"	3/8"	950	760
Electro-zinc Plated Finish						
3000037EG*	3/8	3/4"	1-1/8"	3/8"	500	250
3000050EG*	1/2	3/4"	1-1/8"	7/16"	950	760
3000062EG	5/8	3/4"	1-1/8"	3/8"	950	760
3000075EG	3/4	3/4"	1-1/8"	3/8"	950	760
3000087EG	7/8	3/4"	1-1/8"	3/8"	950	760

*These sizes are FM approved



TOP

May be mounted in either position



BOTTOM

Recommended Torque** (for setscrews):

Setscrew Size	1/4-20	3/8-16	7/16-14	1/2-13	5/8-11	3/4-10
Foot-lbs	4	5	8	11	21	34
Nm	(5)	(7)	(11)	(15)	(28)	(46)

**Recognizing that torque wrenches are generally not used or available on many job sites, the setscrew should be tightened so it contacts the I-beam and then an additional 1/4 to 1/2 turn added.



SWIVEL LOOP HANGER 100

Heavy Duty Adjustable Band Hanger

- Size Range: 1/2" through 8"
- Surface Finish: Electro-zinc plated
- Recommended for the suspension of stationary non-insulated pipe lines
- Features a retained insert nut to ensure that the loop hanger and insert nut stay together
- Conforms with Federal Specification WW-H-171 (Type 10), Manufacturers Standardization Society (MSS) SP-58 and SP-69 (Type 10)

RSN: 1032857

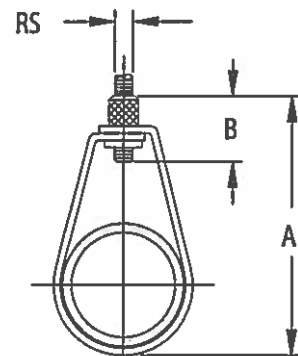
Permit #: 2015-985509-LT

NEW



Part Number	Nominal Pipe Size	RS	A	B	Max. Rec. Load (lbs)
1000050EG	1/2"	3/8"	2-3/4"	1"	300
1000075EG	3/4"	3/8"	3-1/16"	1"	300
1000100EG	1"	3/8"	3-5/16"	1"	300
1000125EG	1-1/4"	3/8"	3-9/16"	1"	300
1000150EG	1-1/2"	3/8"	3-13/16"	1"	300
1000200EG	2"	3/8"	4-1/4"	1"	300
1000250EG	2-1/2"	1/2"	5-5/8"	1-1/4"	1000
1000300EG	3"	1/2"	6-9/16"	1-1/4"	1000
1000350EG	3-1/2"	1/2"	7"	1-1/4"	1000
1000400EG	4"	5/8"	7-3/4"	1-5/16"	1100
1000500EG	5"	5/8"	9-1/8"	1-5/16"	1100
1000600EG	6"	3/4"	10-5/8"	1-9/16"	1250
1000800EG	8"	7/8"	13-1/8"	1-5/8"	1250

3/4" - 8" 1/2" - 8"



LOOP HANGER SURGE RESTRAINT LHSR6

Heavy Duty Adjustable Band Hanger

- Size Range: fits 1/2" through 2" model 100 loop hangers
- Surface Finish: CADDY® COAT Black
- Restricts the upward surge movement of activated fire sprinkler systems
- Meets NFPA® 13 requirements
- One size fits 1/2" thru 2" sizes of the model 100 loop hanger
- Grips the loop hanger – not the nut – allowing fine tuning for height adjustment
- Installs without tools

NEW



HARDWARE THREADED STUD 51

Threaded Studs

- Size Range: 3/8" and 1/2" rod sizes
- Surface Finish: Plain
- Attaches hangers to structural attachments without threading or cutting the rod, UNC Thread Form

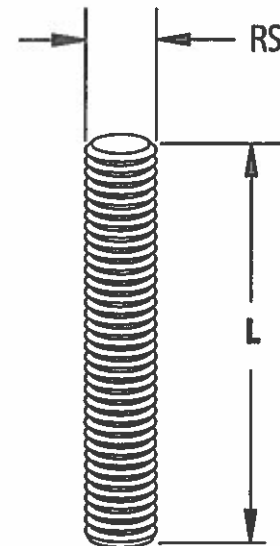
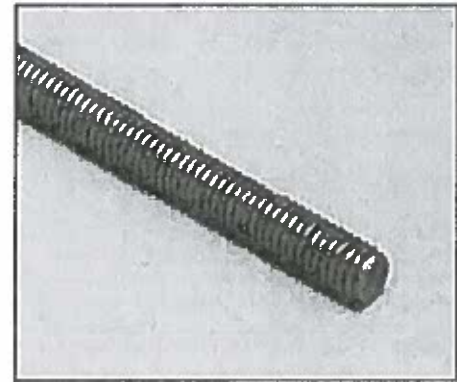
NOTE: Low carbon: tensile: 58,000 psi; yield: 36,000 psi

RSN: 1032857

Permit #: 2015-985509-LT

Part Number	RS	L	Max. Rec. Load (lbs)*
0513702PL	3/8"	2"	610
0513703PL	3/8"	3"	610
0513704PL	3/8"	4"	610
0513705PL	3/8"	5"	610
0513706PL	3/8"	6"	610
0515004PL	1/2"	4"	1130
0515005PL	1/2"	5"	1130
0515006PL	1/2"	6"	1130
0515010PL	1/2"	10"	1130
0515012PL	1/2"	12"	1130

*Load based on Max. 650 F



HARDWARE ROD COUPLING 25

Steel Rod Coupling

- Size Range: 1/4" thru 7/8" rod sizes
- Surface Finish: Electro-zinc Plated
- Intermediate accessory designed to join two lengths of similar UNC threaded rod

Part Number	RS	L	Max. Rec. Load (lbs)
0250025EG	1/4"	7/8"	240
0250037EG	3/8"	1-3/4"	610
0250050EG	1/2"	1-3/4"	1130
0250062EG	5/8"	2-1/8"	1810
0250075EG	3/4"	2-1/4"	2710
0250087EG	7/8"	2-1/2"	3770

