

Only highlighted or clouded revisions are approved on this review. All previous comments apply.



City of Aurora Building Division  
Project: **Electrical Plan Revisions**  
Address: **1411 South Potomac Street Unit 400**  
Occupancy Group: **B**  
Construction Type: **IIIA-SPK**  
RSN: **1449797**  
Permit: **20-1788918**



City of Aurora Building Division  
Reviewed for Code Compliance  
Approved as Noted: **tomckinzi**  
Date: **May 06, 2020**  
2015 INTERNATIONAL CODES & 2017 NEC



**1411 South Potomac**  
1411 South Potomac Street  
Aurora, CO 80012  
Suite 400 & 450



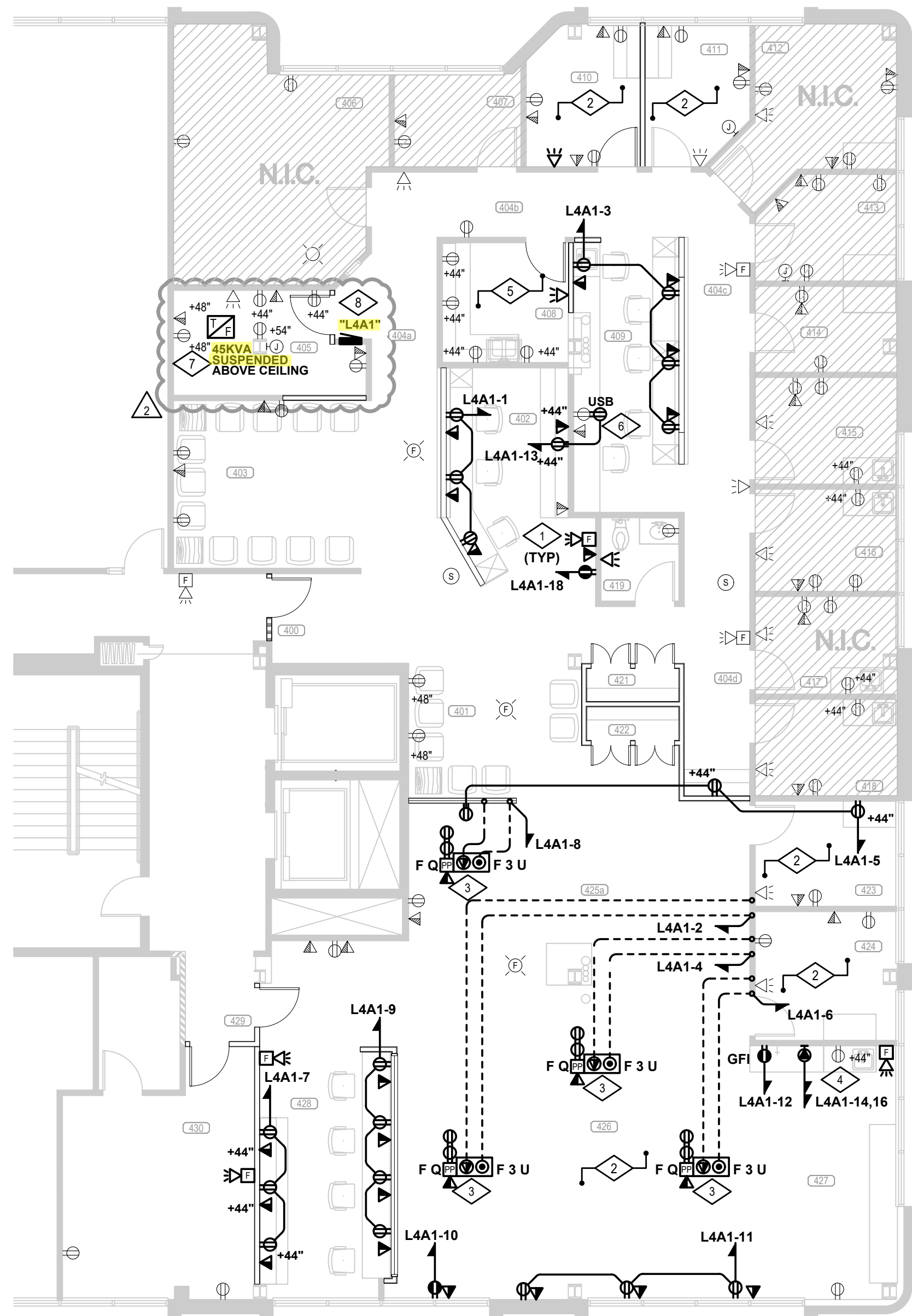
**Colorado Ortho Consultants**

**Dates of Record**  
Project Start Date: **13 December 2019**

Issued On: 09 Jul 2019  
Issued For: Tenant's Review & Approval; and Construction  
08 Aug 2019 Revision # 1

Sheet  
Contents  
Project Team  
Sheet Number  
Mark

BL/AW  
19248  
**E2.0**



## POWER PLAN

SCALE: 1/8"=1'-0"

GENERAL NOTES:

- A. NEW AND RELOCATED ITEMS SHOWN AS BOLD  
EXISTING ITEMS SHOWN AS LIGHT

## DETAIL NOTES

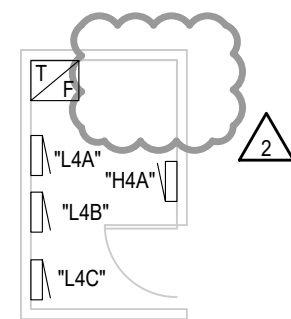
- NEW/RELOCATED FIRE ALARM DEVICE, SEE FIRE ALARM GENERAL NOTES.
- PROVIDE/ENSURE HOSPITAL-GRADE RECEPTACLES FOR ALL DEVICES IN THIS ROOM. ALL BRANCH CIRCUITS IN THIS AREA SHALL BE RUN ENTIRELY IN EMT CONDUIT IN ORDER TO UTILIZE CONDUIT AS REDUNDANT GROUND (PER NEC 517.13) OR PROVIDE GREEN HOSPITAL-GRADE AC/MC CABLE FOR REDUNDANT GROUND. PROVIDE GFCI DEVICES THROUGHOUT. PROVIDE EQUIPMENT GROUNDING CONDUCTOR THROUGHOUT.
- ALTERNATE: PROVIDE PRICING FOR BOTH POKE-THRU AND POWER POLES SEPARATELY.
- NEW DRYER, PROVIDE NEMA 6-30R RECEPTACLE, CONNECT USING 3#10CU #10GND IN 3/4IN CONDUIT. VERIFY EXACT CONNECTION WITH TENANT PRIOR TO ORDERING.
- ENSURE RECEPTACLES WITHIN 6" OF SINK EDGE HAVE ACCESSIBLE GFCI PROTECTION. PROVIDE IF NEEDED.
- PROVIDE USB CHARGER RECEPTACLE, HUBBELL USB8300W OR EQUAL. COORDINATE WITH ARCHITECT/TENANT FOR FINAL PRODUCT.
- NEW SUSPENDED TRANSFORMER, E.C. TO ENSURE ALL MINIMUM CLEARANCES ARE MET PRIOR TO INSTALLATION. LABEL FEED OF TRANSFORMER ON TRANSFORMER. SEE TRANSFORMER SUSPENSION DETAIL. FOR INFORMATION. COORDINATE FINAL POSITIONS OF TRANSFORMER WITH PROPERTY MANAGEMENT.
- NEW PANEL. ENSURE MINIMUM CLEARANCES ARE MET PRIOR TO INSTALLATION. ENSURE 6" WALL DEPTH FOR FLUSH MOUNTING OF PANEL. COORDINATE FINAL LOCATION OF PANEL WITH PROPERTY MANAGEMENT. REFER TO PANEL SCHEDULE FOR ADDITIONAL INFORMATION.

## Room Schedule

400	Entry	416	Exam
401	Waiting	417	Exam
402	Waiting	418	Exam
403	Reception	419	Exist. Restroom
404	Hallway	420	---
405	Storage	421	Storage
406	X-Ray	422	Storage
407	Office	423	Exam
408	Break Room	424	Exam
409	MA	425	Open PT
410	Exam	426	Open PT
411	Exam	427	PT Storage
412	Exam	428	PT Work Room
413	Exam	429	Corridor
414	Exam	430	Vacant Suite
415	Casting	431	---

Provide a grounded electrode system bonded to the service equipment enclosure, grounded conductors, and grounded electrode conductors. 2017 NEC 250.50 and 250.104.

Install electrical connections per 2017 NEC 110.14, identify disconnects per 2017 NEC 110.22 and provide working space around electrical equipment per 2017 NEC 110.26.



## ELECTRICAL ROOM

SCALE: 1/8"=1'-0"

(NO NEW WORK)



SYSTEM FURNITURE SCHEDULE & CONNECTION NOTES					
1. ELECTRICAL CONTRACTOR SHALL FULLY FIELD COORDINATE FURNITURE SYSTEM WORK STATION REQUIREMENTS WITH TENANT REPRESENTATIVES AND ACTUAL FURNITURE SYSTEM SUPPLIED. PROVIDE CIRCUITS, TELEPHONE/DATA OUTLETS, AND CONDUIT PER CODES BELOW. MULTIWIRE NEUTRALS SHALL BE MIN #10AWG. STUB TELEPHONE/DATA CONDUIT UP 6" INTO ACCESSIBLE CEILING SPACE. PROVIDE PULL WIRE IN CONDUIT AND PLASTIC BUSHINGS ON CONDUIT ENDS. TELEPHONE/DATA CABLING AND DEVICES SHALL BE PROVIDED BY TENANT COMMUNICATIONS SYSTEM VENDOR UNDER SEPARATE CONTRACT. ELECTRICAL CONTRACTOR SHALL PROVIDE FINAL CONNECTIONS TO FURNITURE SYSTEM WITH "SEALTIGHT" FLEXIBLE CONDUIT WHIPS. COORDINATE EXACT LOCATIONS, CONDUIT ROUTING, AND REQUIREMENTS WITH ARCHITECTURAL PLANS, PROPERTY MANAGEMENT, AND FURNITURE SYSTEM SUPPLIER PRIOR TO ROUGH IN, CORE DRILLING AND ORDERING OF EQUIPMENT, (TYPICAL).					
• WALL: PROVIDE TWO FOUR INCH SQUARE (DOUBLE GANG) WALL MOUNTED JUNCTION BOXES FOR POWER AND DATA. MOUNT OUTLETS AT +15" A.F.F.					
• FLOOR: PROVIDE FULLY ASSEMBLED FIRE-RATED POKE-THRU PER CODE BELOW, OR EQUAL. COORDINATE COVER COLOR WITH ARCHITECT. ELECTRICAL CONTRACTOR SHALL PROVIDE X-RAYING OF FLOOR PRIOR TO CORE DRILL. ROUTE COMM CONDUIT TO NEAREST FULL HEIGHT ACCESSIBLE WALL.					
• POWER POLE: WIREMOLD #30TP-2V OR EQUAL. PROVIDE TWO FOUR INCH SQUARE (DOUBLE GANG) JUNCTION BOXES ABOVE CEILING FOR POWER AND DATA. PROVIDE DATA GROMMET SIZED PER COMM CONDUIT CODE.					
	CODE	CIRCUIT TYPE	CODE	COMM CONDUIT SIZE	CODE
	A	4 CIRCUIT 8 WIRE	1	1/2" C	P
	B	3 CIRCUIT 7 WIRE	2	3/4" C	Q
	C	3 CIRCUIT 5 WIRE	3	1" C	S
	D	2 CIRCUIT 6 WIRE	4	1-1/4" C	T
	E	2 CIRCUIT 4 WIRE	5	1-1/2" C	U
	F	1 CIRCUIT 3 WIRE	6	2" C	V
	G	SEE DETAIL NOTES	7	SEE DETAIL NOTES	W
		POWER POLE & FLOOR BOX IDENT			
		OWNER SUPPLIED POWER POLE			
		NEW POWER POLE, SEE ABOVE			
		WIREMOLD 4FFATC SERIES (3/4" PWR, 1-1/4" COMM)			
		WIREMOLD RC7AFFTC + RC7AM2TC (3/4" PWR, 2" COMM)			
		HUBBELL STPTFIT (1" PWR, 1" COMM)			
		HUBBELL PT71SD + PT2FIT (3/4" PWR, 2" COMM)			
		SEE DETAIL NOTES			



## LIGHTING PLAN

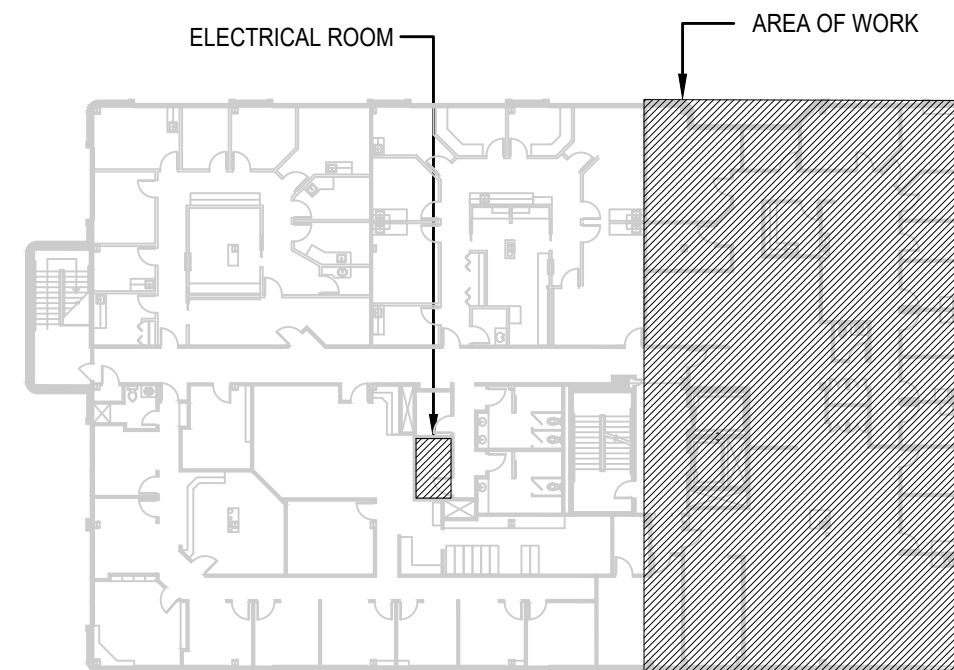
SCALE: 1/8"=1'-0"

GENERAL NOTES:

- A. NEW AND RELOCATED ITEMS SHOWN AS BOLD  
EXISTING ITEMS SHOWN AS LIGHT
- B. LOWER CASE LETTERING INDICATED ON SWITCHES AND FIXTURES IF SHOWN, WHICH SWITCHES CONTROL WHICH FIXTURES.

## DETAIL NOTES

- CONNECT TO LOCAL LIGHTING CIRCUIT (AND CONTROLS, AS APPLICABLE), E.C. TO VERIFY NO MORE THAN 70% LOAD ON A SINGLE 277V LIGHTING CIRCUIT.
- PROVIDE FIXTURE WITH 90-MIN UL924 SWITCHABLE BATTERY BACKUP AND TEST SWITCH AND CIRCUIT TO LOCAL LIGHTING CIRCUIT AHEAD OF MANUAL CONTROL, BUT NOT SENSORS. CONNECT SWITCH LEADS SO POWER FAILURE OVERRIDES SENSOR CONTROL.
- NEW/RELOCATED EXIT SIGN. UTILISE DEMOLISHED EXIT SIGNS AND COORDINATE WITH BUILDING ENGINEER FOR EXIT SIGNS IN BUILDING STOCKPILE PRIOR TO ORDERING NEW. FOR NEW, MATCH BUILDING STANDARD, GREEN LED LETTERING WITH WHITE HOUSING AND 90-MIN BATTERY BACKUP. CONNECT TO LOCAL LIGHTING CIRCUIT AHEAD OF CONTROL.
- E.C. TO CLEAN/REPAIR/REBALLAST/RELAMP EXISTING/RELOCATED FIXTURES AS NECESSARY TO PROVIDE A LIKE-NEW APPEARANCE.
- NEW SWITCH TO CONTROL ALL FIXTURES IN THIS ROOM. EXTEND NEUTRAL AS REQUIRED FOR WALL MOUNTED DUAL TECHNOLOGY VACANCY SENSOR.
- EXTENTS OF DAYLIGHT ZONE. DAYLIGHT DIMMING NOT APPLIED. FIXTURES IN DAYLIGHT ZONE ARE LESS THAN 150W TOTAL PER SPACE.



## KEY PLAN

