

LYNN INSTITUTE

1411 POTOMAC - SUITE 420
AURORA, CO 80012

APRIL 2018

#18-1420046

TESTING

ADJUSTING

TABB CERTIFIED

SYSTEM BALANCING

**Complete
Mechanical
Balancing, Inc.**

PO BOX 27706

DENVER, CO. 80227

FAX 303-972-7453

PHONE 303-948-5429

TESTING
ADJUSTING
SYSTEM BALANCING
TABB CERTIFIED

**COMPLETE
MECHANICAL
BALANCING, INC.**

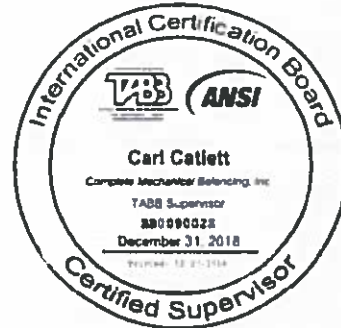
PAGE 13060
P.O. BOX 27706
DENVER, CO. 80227
FAX 303-761-1317
PHONE 303-948-5429

GENERAL INFORMATION

PROJECT LYNN INSTITUTE
LOCATION 1411 POTOMAC, SUITE 420, AURORA, CO 80012
ARCHITECT
MECHANICAL ENGINEER BRIAN SEYFERTH & ASSOCIATED, INC.
SHEETMETAL CONTRACTOR WRAY MECHANICAL SYSTEMS
BALANCING CREW C.CATLETT J.SULLIVAN T.WILLOUGHBY DATE APRIL 2018

INSTRUMENTS USED

FLOW HOOD ALNOR / SHORTRIDGE
ANEMOMETER DAVIS TYPE LCA 6000
SPEED INDICATOR BIDDLE TYPE 9915
AMMETER / VOLTMETER AMPROBE TYPE DIGITAL
INCLINED DRAFT GAGE DWYER 0-0.25" 0-0.50" 400"
MAGNEHELIC GAGE 0-0.50" 0-1.0" 0-2.0" 0-4.0" 0-8.0"
PRESSURE GAGE -30--+30 PSI 0-60 PSI 0-100 PSI
PRESSURE GAGE DIFFERENTIAL BARCO 0-50" 0-100" 300" 500" 0-100"
PYROMETER ALNOR
THERMOMETERS FLUKE TYPE 52
MICROMANOMETER ALNOR TYPE 530



PROJECT ALTITUDE 5200'
FLOW HOOD CORRECT 1.10 APPLIED TO: AREA (K FACTOR) X VELOCITY
STATIC PRESSURE CORRECTION 1.21
RECORDED PRESSURE READINGS ARE MEASURED X CORRECTED

COMPLETE

MECHANICAL

BALANCING, INC.

PAGE 13060-1

AIR SYSTEM RECAP SHEET

JOB: LYNN INSTITUTE

FUNCTION	UNIT NO.	ZONE OR		REQ'D	ACTL	% OF		REMARKS	PAGE
		MAIN		CFM	CFM	REQ'D	HEAT		
SUPPLY	FBP-1	1-4		835	776	93	970	VAV 100% OPEN	2
SUPPLY	FBP-2	5-7		915	638	70	700	VAV 100% OPEN	2
SUPPLY	VAV-3	8-10		305	303	99			2
TOTAL				2055	1717	84			

MECHANICAL BALANCING

PROJECT

LOCATION

FAN SYSTEM

CONTRACTOR

LYNN INSTITUTE

1411 S. POTOMAC-SUITE 420

FPB'S & VAV

WRAY MECHANICAL SYSTEMS

PAGE NO

13060-2

DATE

04-24-18

BALANCER

J.S. & T.W.

[illegible]

REMARKS

AIRBAL

NOTE: THE PRESENT OF THE SPECIFICATION AND THE DRAWING IS TO PROVIDE A COMPLETE AND FULLY OPERATIONAL MEDICAL STYLE. THE CONSULTING CONTRACTOR SHALL FURNISH AND INSTALL ALL LABOR, MATERIALS, AND EQUIPMENT NECESSARY TO COMPLETE THE MEDICAL STYLE.

[illegible][illegible][illegible]

SLACK SEATTLE
SEN. AL CORDELL (D-WASH.) AND WASHINGTON STATE'S 9TH CONGRESSMAN, NOW-DEAD, WAS KILLED IN A TRUCK CRASH IN A TREE RESEMBLING THE ONE SHOWN IN THE SLACK KILLING. CORDELL HAD TRIPLED DOWN A STEEP HILL IN SEATTLE AND FELL INTO A RIVER. THE CRASH KILLED CORDELL.

[illegible][illegible]

LEGEND	
<input checked="" type="checkbox"/>	STATUS, SEE SYMBOL
<input type="checkbox"/>	DELT, SEE SYMBOL
	NOT NON-REACTIVE FACTORS
	UNKNOWN REACTIVITY FACTORS
	VERY HIGH REACTIVITY FACTORS
	EXTREME REACTIVITY FACTORS
	EXTREME TOXIC FACTORS
	FACTORS TO BE MONITORED
	MONITORED TO VERIFY EQUIPMENT
	ONLY MONITORED WITHIN 500
	EQUIPMENT DESIGNATION
	Special Item Number
	Internal use only
	Supply not assured
	Correct to Drawing

WINTERWORK SCHEDULE					
PROJECT	PROJECT/OWNER	ACROSS	APPROX. \$25	WEEKS REQUIRED (2-4 WEEKS)	WEEKS REQUIRED (2-4 WEEKS)
2 YEAR	YEAR	WEEKS	2-4	1-2	1

[illegible]

FAN TRIUMPH UNIT SCHEDULE												
INDEX		PRODUCTION AREA					NON-PRODUCING					
		NO. BATT	NO. CH	NO. CH	VALVE	VALVE	NO. CH	VALVE	W	SA	CH	STAND
WATER	WATER	WATER	WATER	WATER	WATER	WATER	WATER	WATER	WATER	WATER	WATER	WATER
1	1	1	1	1	1	1	1	1	1	1	1	1
2	2	2	2	2	2	2	2	2	2	2	2	2
3	3	3	3	3	3	3	3	3	3	3	3	3
4	4	4	4	4	4	4	4	4	4	4	4	4
5	5	5	5	5	5	5	5	5	5	5	5	5
6	6	6	6	6	6	6	6	6	6	6	6	6
7	7	7	7	7	7	7	7	7	7	7	7	7
8	8	8	8	8	8	8	8	8	8	8	8	8
9	9	9	9	9	9	9	9	9	9	9	9	9
10	10	10	10	10	10	10	10	10	10	10	10	10
11	11	11	11	11	11	11	11	11	11	11	11	11
12	12	12	12	12	12	12	12	12	12	12	12	12
13	13	13	13	13	13	13	13	13	13	13	13	13
14	14	14	14	14	14	14	14	14	14	14	14	14
15	15	15	15	15	15	15	15	15	15	15	15	15
16	16	16	16	16	16	16	16	16	16	16	16	16
17	17	17	17	17	17	17	17	17	17	17	17	17
18	18	18	18	18	18	18	18	18	18	18	18	18
19	19	19	19	19	19	19	19	19	19	19	19	19
20	20	20	20	20	20	20	20	20	20	20	20	20
21	21	21	21	21	21	21	21	21	21	21	21	21
22	22	22	22	22	22	22	22	22	22	22	22	22
23	23	23	23	23	23	23	23	23	23	23	23	23
24	24	24	24	24	24	24	24	24	24	24	24	24
25	25	25	25	25	25	25	25	25	25	25	25	25
26	26	26	26	26	26	26	26	26	26	26	26	26
27	27	27	27	27	27	27	27	27	27	27	27	27
28	28	28	28	28	28	28	28	28	28	28	28	28
29	29	29	29	29	29	29	29	29	29	29	29	29
30	30	30	30	30	30	30	30	30	30	30	30	30
31	31	31	31	31	31	31	31	31	31	31	31	31
32	32	32	32	32	32	32	32	32	32	32	32	32
33	33	33	33	33	33	33	33	33	33	33	33	33
34	34	34	34	34	34	34	34	34	34	34	34	34
35	35	35	35	35	35	35	35	35	35	35	35	35
NOTES: 1. REFER TO REMARKS												

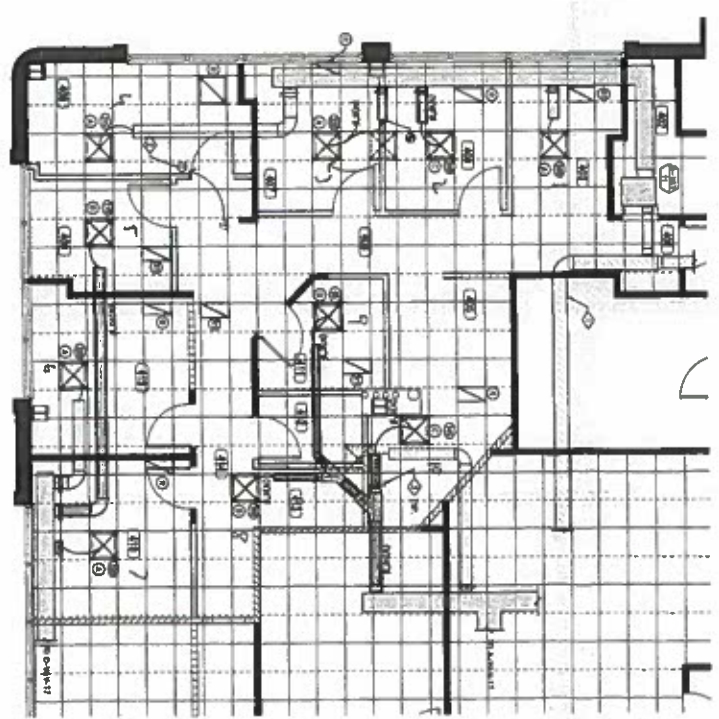
[illegible]

401	Public Center	410	Class
402	Visual Resources	411	Spinal Nerve
403	Ultrasound	412	Class
404	Library	413	Spinal Cord Inj.
405	Radio Room	414	Spinal Cord Inj.
406	Head Room	415	Spinal Cord Inj.
407	Head Room	416	Spinal Cord Inj.
408	Spinal Nerve	417	Spinal Cord Inj.
409	Class	418	Spinal Cord Inj.

- ① (a) INITIAL PREPARING SURVEY AND
- ② POLICE & (b) INVESTIGATIVE
- ③ (c) ANALYSIS, VOUCHER PREPARED

ALL PHARMACEUTICALS & FACTORIES ARE LISTED BY REGION UNDER OTHERWISE NOTED.

**PLEASE USE EXPANSIBLE
CELLS/FORMATS.**



MECHANICAL PLAN
SCALE: 1/8" = 1'-0"

9/14/3

Lynn Institute

1411 South Potomac
1411 South Potomac
Aurora, CO 80012
Suite 420



PROVIDENCE ENGINEERING
2503 South Prince Street
Littleton, Colorado 80120
Phone: (303) 797-7777
Fax: (303) 797-7773
ISA # 17435

**THE
M1.0**